

For Research Use Only

BCL3 Recombinant antibody, PBS Only (Capture)

Catalog Number: 84882-4-PBS



Basic Information

Catalog Number: 84882-4-PBS	GenBank Accession Number: BC064993	Purification Method: Protein A purification
Size: 1 mg/ml	GeneID (NCBI): 602	CloneNo.: 242233D7
Source: Rabbit	UNIPROT ID: P20749	
Isotype: IgG	Full Name: B-cell CLL/lymphoma 3	
Immunogen Catalog Number: AG13375	Calculated MW: 446 aa, 47 kDa	

Applications

Tested Applications:
Sandwich ELISA, Indirect ELISA, Sample test

Species Specificity:
human

Background Information

Storage

Storage:
Store at -80°C.
The product is shipped with ice packs. Upon receipt, store it immediately at -80°C

Storage Buffer:
PBS Only

For technical support and original validation data for this product please contact:

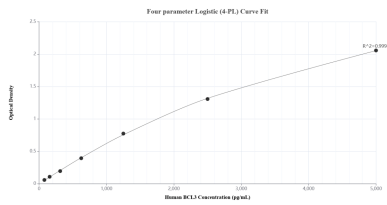
T: 4006900926

E: Proteintech-CN@ptglab.com

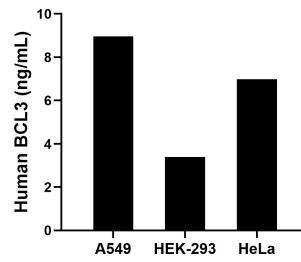
W: ptgcn.com

This product is exclusively available under Proteintech Group brand and is not available to purchase from any other manufacturer.

Selected Validation Data



Sandwich ELISA standard curve of MP01655-3, Human BCL3 Recombinant Matched Antibody Pair - PBS only. 84882-4-PBS was coated to a plate as the capture antibody and incubated with serial dilutions of standard Ag13375. 84882-3-PBS was HRP conjugated as the detection antibody. Range: 78.1-5000 pg/mL.



The mean BCL3 concentration was determined to be 9.0 ng/mL in A549 cell extract based on a 2.3 mg/mL extract load, 3.4 ng/mL in HEK-293 cell extract based on a 2.9 mg/mL extract load and 7.0 ng/mL in HeLa cell extract based on a 1.0 mg/mL extract load.