

For Research Use Only

MTHFD1 Recombinant antibody, PBS Only

Catalog Number: 84884-5-PBS



Basic Information

Catalog Number:

84884-5-PBS

Concentration:

1 mg/ml

Source:

Rabbit

Isotype:

IgG

Immunogen Catalog Number:

AG1225

GenBank Accession Number:

BC009806

GeneID (NCBI):

4522

UNIPROT ID:

P11586

Full Name:

methylenetetrahydrofolate
dehydrogenase (NADP+ dependent) 1,
methenyltetrahydrofolate
cyclohydrolase,
formyltetrahydrofolate synthetase

Calculated MW:

101 kDa

Observed MW:

101-110 kDa

Purification Method:

Protein A purification

CloneNo.:

242388F1

Applications

Tested Applications:

WB, IF/ICC, Indirect ELISA

Species Specificity:

human

Background Information

MTHFD1 is a trifunctional enzyme involved in the pathway tetrahydrofolate interconversion, which is part of One-carbon metabolism. MTHFD1 is associated with HCC and CRC progression. It has been reported that MTHFD-deficient patient fibroblasts exhibit enriched MTHFD1 in the nucleus which is critical for de novo dTMP synthesis. (PMID: 31133746, 30997850, 31421459, 25548164)

Storage

Storage:

Store at -80°C.

The product is shipped with ice packs. Upon receipt, store it immediately at -80°C

Storage Buffer:

PBS Only

For technical support and original validation data for this product please contact:

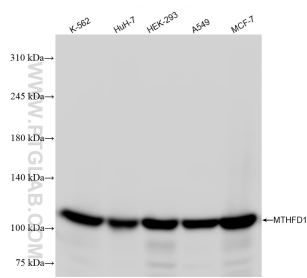
T: 4006900926

E: Proteintech-CN@ptglab.com

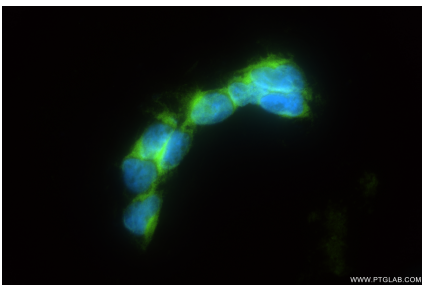
W: ptgcn.com

This product is exclusively available under Proteintech Group brand and is not available to purchase from any other manufacturer.

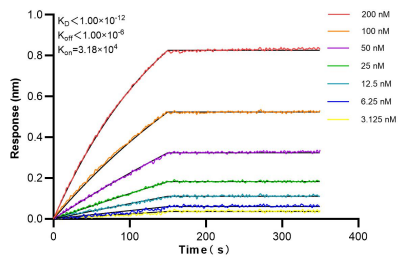
Selected Validation Data



Various lysates were subjected to SDS PAGE followed by western blot with 84884-5-RR (MTHFD1 antibody) at dilution of 1:10000 incubated at room temperature for 1.5 hours. This data was developed using the same antibody clone with 84884-5-PBS in a different storage buffer formulation.



Immunofluorescent analysis of (4% PFA) fixed HEK-293 cells using MTHFD1 antibody (84884-5-RR, Clone: 242388F1) at dilution of 1:400 and CoraLite® 488-Conjugated Goat Anti-Rabbit IgG(H+L) (SA00013-2). This data was developed using the same antibody clone with 84884-5-PBS in a different storage buffer formulation.



Biolayer interferometry (BLI) kinetic assays of 84884-5-RR against Human MTHFD1 were performed. The affinity constant is below 1 pM.