

For Research Use Only

Component C9 Recombinant antibody, PBS Only (Capture)

Catalog Number:84890-5-PBS



Basic Information

Catalog Number:

84890-5-PBS

Size:

1 mg/ml

Source:

Rabbit

Isotype:

IgG

GenBank Accession Number:

NM_001737.4

GeneID (NCBI):

735

UNIPROT ID:

P02748

Full Name:

complement component 9

Calculated MW:

63kDa

Purification Method:

Protein A purification

CloneNo.:

242475E4

Applications

Tested Applications:

Sandwich ELISA, Indirect ELISA, Sample test

Species Specificity:

human

Background Information

Storage

Storage:

Store at -80°C.

The product is shipped with ice packs. Upon receipt, store it immediately at -80°C

Storage Buffer:

PBS Only

For technical support and original validation data for this product please contact:

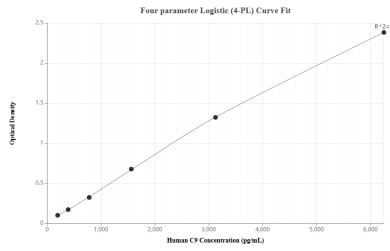
T: 4006900926

E: Proteintech-CN@ptglab.com

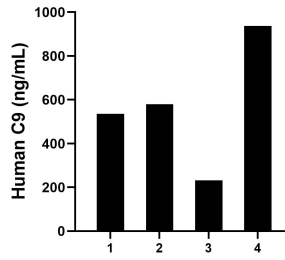
W: ptgcn.com

This product is exclusively available under Proteintech Group brand and is not available to purchase from any other manufacturer.

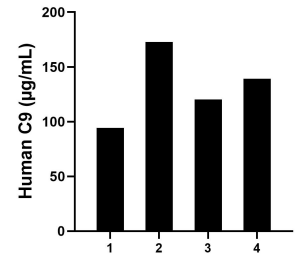
Selected Validation Data



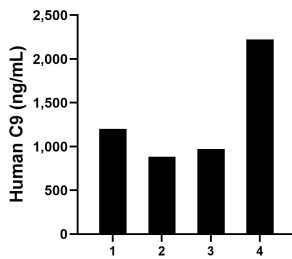
Sandwich ELISA standard curve of MP01620-3, Human C9 Recombinant Matched Antibody Pair - PBS only. 84890-5-PBS was coated to a plate as the capture antibody and incubated with serial dilutions of standard Eg1282. 84890-3-PBS was HRP conjugated as the detection antibody. Range: 195.3-6250 µg/mL



Human milk of four individual healthy human donors was measured. The human C9 concentration of detected samples was determined to be 570.94 ng/mL with a range of 230.92 - 937.80 ng/mL



Serum of four individual healthy human donors was measured. The human C9 concentration of detected samples was determined to be 131.61 µg/mL with a range of 94.28 - 172.80 µg/mL



Tears of four individual healthy human donors was measured. The human C9 concentration of detected samples was determined to be 1,320.67 ng/mL with a range of 882.22 - 2,224.25 ng/mL