

For Research Use Only

# AMACR/p504S Recombinant antibody, PBS Only (Detector)

Catalog Number: 84891-3-PBS



## Basic Information

<b>Catalog Number:</b> 84891-3-PBS	<b>GenBank Accession Number:</b> BC009471	<b>Purification Method:</b> Protein A purification
<b>Size:</b> 1 mg/ml	<b>GeneID (NCBI):</b> 23600	<b>CloneNo.:</b> 242456G6
<b>Source:</b> Rabbit	<b>UNIPROT ID:</b> Q9UHK6	
<b>Isotype:</b> IgG	<b>Full Name:</b> alpha-methylacyl-CoA racemase	
<b>Immunogen Catalog Number:</b> AG8720	<b>Calculated MW:</b> 382 aa, 42 kDa	

## Applications

**Tested Applications:**  
Cytometric bead array, Sandwich ELISA, Indirect ELISA,  
Sample test

**Species Specificity:**  
human

## Background Information

### Storage

**Storage:**  
Store at -80°C.  
**The product is shipped with ice packs. Upon receipt, store it immediately at -80°C**

**Storage Buffer:**  
PBS Only

For technical support and original validation data for this product please contact:

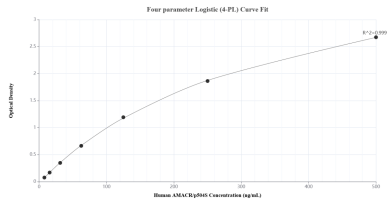
T: 4006900926

E: [Proteintech-CN@ptglab.com](mailto:Proteintech-CN@ptglab.com)

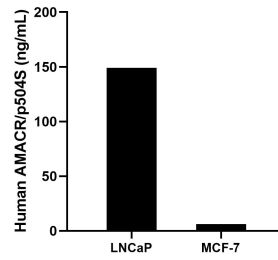
W: [ptgcn.com](http://ptgcn.com)

**This product is exclusively available under Proteintech Group brand and is not available to purchase from any other manufacturer.**

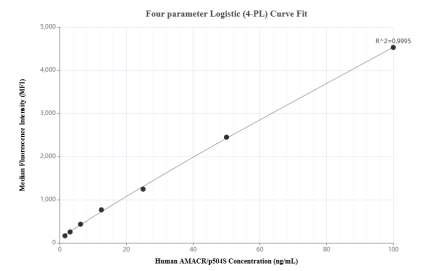
## Selected Validation Data



Sandwich ELISA standard curve of MP01623-3, Human AMACR/p504S Recombinant Matched Antibody Pair - PBS only. 84891-4-PBS was coated to a plate as the capture antibody and incubated with serial dilutions of standard Ag8720. 84891-3-PBS was HRP conjugated as the detection antibody. Range: 7.81-500 ng/mL



The mean AMACR/p504S concentration was determined to be 149.00 ng/mL in LNCaP cell extract based on a 2.00 mg/mL extract load and 6.31 ng/mL in MCF-7 cell extract based on a 1.20 mg/mL extract load.



Cytometric bead array standard curve of MP01623-2, AMACR/p504S Recombinant Matched Antibody Pair, PBS Only. Capture antibody: 84891-2-PBS. Detection antibody: 84891-3-PBS. Standard: Ag8720. Range: 1.563-100 ng/mL