

For Research Use Only

RFC2 Recombinant antibody, PBS Only (Capture)

Catalog Number: 84892-1-PBS



Basic Information

Catalog Number: 84892-1-PBS	GenBank Accession Number: BC002813	Purification Method: Protein A purification
Size: 1 mg/ml	GeneID (NCBI): 5982	CloneNo.: 242503E12
Source: Rabbit	UNIPROT ID: P35250	
Isotype: IgG	Full Name: replication factor C (activator 1) 2, 40kDa	
Immunogen Catalog Number: AG0663	Calculated MW: 40 kDa	

Applications

Tested Applications:
Cytometric bead array, Sandwich ELISA, Indirect ELISA,
Sample test

Species Specificity:
human

Background Information

Storage

Storage:
Store at -80°C.
The product is shipped with ice packs. Upon receipt, store it immediately at -80°C

Storage Buffer:
PBS Only

For technical support and original validation data for this product please contact:

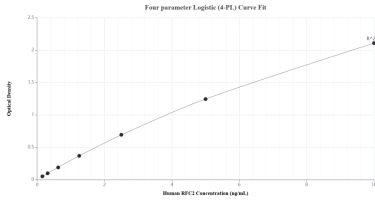
T: 4006900926

E: Proteintech-CN@ptglab.com

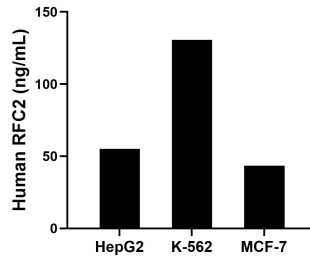
W: ptgcn.com

This product is exclusively available under Proteintech Group brand and is not available to purchase from any other manufacturer.

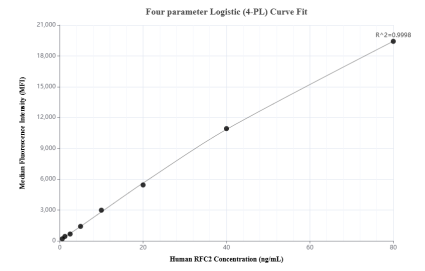
Selected Validation Data



Sandwich ELISA standard curve of MP01625-2, Human RFC2 Recombinant Matched Antibody Pair - PBS only. 84892-1-PBS was coated to a plate as the capture antibody and incubated with serial dilutions of standard Ag0663. 84892-2-PBS was HRP conjugated as the detection antibody. Range: 0.156-10 ng/mL



The mean RFC2 concentration was determined to be 55.11 ng/mL in HepG2 cell extract based on a 1.00 mg/mL extract load, 130.72 ng/mL in K-562 cell extract based on a 2.40 mg/mL extract load and 43.49 ng/mL in MCF-7 cell extract based on a 1.20 mg/mL extract load.



Cytometric bead array standard curve of MP01625-2, RFC2 Recombinant Matched Antibody Pair, PBS Only. Capture antibody: 84892-1-PBS. Detection antibody: 84892-2-PBS. Standard: Ag0663. Range: 0.625-80 ng/mL