

For Research Use Only

RPL7L1 Recombinant antibody, PBS Only

Catalog Number: 84907-1-PBS



Basic Information

| | | |
|---|--|---|
| Catalog Number: 84907-1-PBS | GenBank Accession Number: BC058020 | Purification Method: Protein A purification |
| Size: 1 mg/ml | GeneID (NCBI): 285855 | CloneNo.: 242118B2 |
| Source: Rabbit | UNIPROT ID: Q6DK11 | |
| Isotype: IgG | Full Name: ribosomal protein L7-like 1 | |
| Immunogen Catalog Number: AG10106 | Calculated MW: 246 aa, 29 kDa | |
| | Observed MW: 29 kDa | |

Applications

Tested Applications:
WB, Indirect ELISA

Species Specificity:
human, mouse, rat

Background Information

Storage

Storage:
Store at -80°C.
The product is shipped with ice packs. Upon receipt, store it immediately at -80°C

Storage Buffer:
PBS Only

For technical support and original validation data for this product please contact:

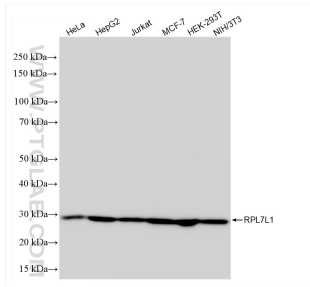
T: 4006900926

E: Proteintech-CN@ptglab.com

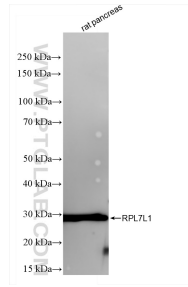
W: ptgcn.com

This product is exclusively available under Proteintech Group brand and is not available to purchase from any other manufacturer.

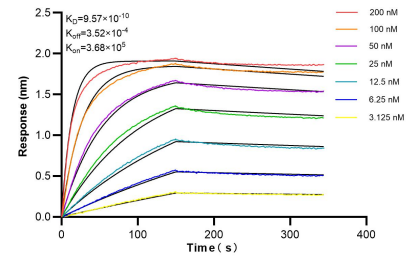
Selected Validation Data



Various lysates were subjected to SDS PAGE followed by western blot with 84907-1-RR (RPL7L1 antibody) at dilution of 1:5000 incubated at room temperature for 1.5 hours. This data was developed using the same antibody clone with 84907-1-PBS in a different storage buffer formulation.



rat pancreas tissue were subjected to SDS PAGE followed by western blot with 84907-1-RR (RPL7L1 antibody) at dilution of 1:5000 incubated at room temperature for 1.5 hours. This data was developed using the same antibody clone with 84907-1-PBS in a different storage buffer formulation.



Biacore BLI kinetic assays of 84907-1-RR against Human RPL7L1 were performed. The affinity constant is 0.957 nM.