

For Research Use Only

# RPL7L1 Recombinant antibody

Catalog Number: 84907-1-RR



## Basic Information

<b>Catalog Number:</b> 84907-1-RR	<b>GenBank Accession Number:</b> BC058020	<b>Purification Method:</b> Protein A purification
<b>Size:</b> 1000 ug/ml	<b>GeneID (NCBI):</b> 285855	<b>CloneNo.:</b> 242118B2
<b>Source:</b> Rabbit	<b>UNIPROT ID:</b> Q6DK11	<b>Recommended Dilutions:</b> WB 1:2000-1:10000
<b>Isotype:</b> IgG	<b>Full Name:</b> ribosomal protein L7-like 1	
<b>Immunogen Catalog Number:</b> AG10106	<b>Calculated MW:</b> 246 aa, 29 kDa	
	<b>Observed MW:</b> 29 kDa	

## Applications

**Tested Applications:**  
WB, ELISA

**Species Specificity:**  
human, mouse, rat

### Positive Controls:

WB : HeLa cells, rat pancreas tissue, HepG2 cells, Jurkat cells, MCF-7 cells, HEK-293T cells, NIH/3T3 cells

## Background Information

### Storage

**Storage:**  
Store at -20°C. Stable for one year after shipment.

**Storage Buffer:**  
PBS with 0.02% sodium azide and 50% glycerol pH 7.3.

Aliquoting is unnecessary for -20°C storage

For technical support and original validation data for this product please contact:

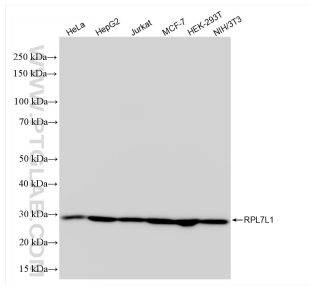
T: 4006900926

E: Proteintech-CN@ptglab.com

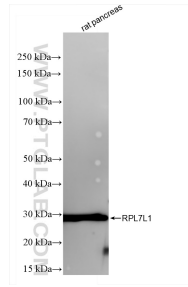
W: ptgcn.com

This product is exclusively available under Proteintech Group brand and is not available to purchase from any other manufacturer.

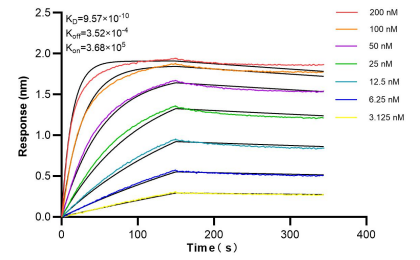
## Selected Validation Data



Various lysates were subjected to SDS PAGE followed by western blot with 84907-1-RR (RPL7L1 antibody) at dilution of 1:5000 incubated at room temperature for 1.5 hours.



rat pancreas tissue were subjected to SDS PAGE followed by western blot with 84907-1-RR (RPL7L1 antibody) at dilution of 1:5000 incubated at room temperature for 1.5 hours.



Bi-layer interferometry (BLI) kinetic assays of 84907-1-RR against Human RPL7L1 were performed. The affinity constant is 0.957 nM.