

For Research Use Only

IMPDH1 Recombinant antibody, PBS Only (Capture)

Catalog Number: 84913-1-PBS



Basic Information

Catalog Number: 84913-1-PBS	GenBank Accession Number: BC033622	Purification Method: Protein A purification
Size: 1 mg/ml	GeneID (NCBI): 3614	CloneNo.: 242329D8
Source: Rabbit	UNIPROT ID: P20839	
Isotype: IgG	Full Name: IMP (inosine monophosphate) dehydrogenase 1	
Immunogen Catalog Number: AG17473	Calculated MW: 563 aa, 60 kDa	
	Observed MW: 53-60 kDa	

Applications

Tested Applications:
WB, Sandwich ELISA, Indirect ELISA, Sample test

Species Specificity:
human

Background Information

IMPDH1 (Inosine-5'-monophosphate dehydrogenase 1) is also named as IMPD1, IMP dehydrogenase 1 and belongs to the IMPDH/GMPR family. It catalyzes the rate limiting step of de novo guanine synthesis and an important target for the development of drugs with both chemotherapeutic and immunosuppressive activity. It may also have a role in the development of malignancy and the growth progression of some tumors. This protein has some isoforms produced by alternative splicing with the molecular mass of 53-65 kDa.

Storage

Storage:
Store at -80°C.
The product is shipped with ice packs. Upon receipt, store it immediately at -80°C

Storage Buffer:
PBS Only

For technical support and original validation data for this product please contact:

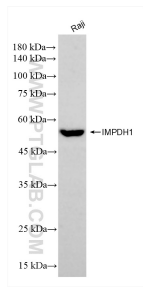
T: 4006900926

E: Proteintech-CN@ptglab.com

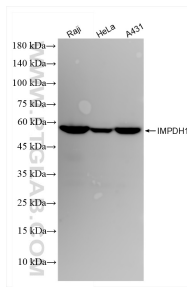
W: ptgcn.com

This product is exclusively available under Proteintech Group brand and is not available to purchase from any other manufacturer.

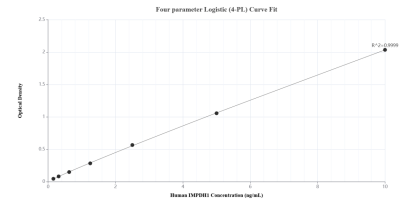
Selected Validation Data



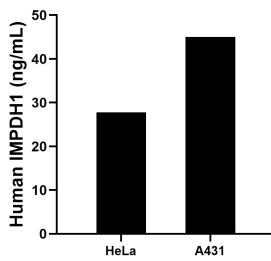
Raji cells were subjected to SDS PAGE followed by western blot with 84913-1-RR (IMPDH1 antibody) at dilution of 1:4000 incubated at room temperature for 1.5 hours. This data was developed using the same antibody clone with 84913-1-PBS in a different storage buffer formulation.



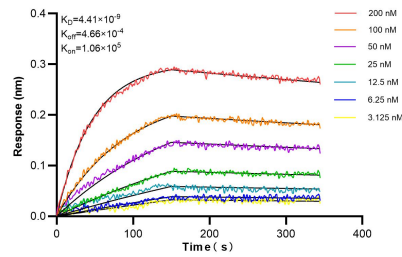
Various lysates were subjected to SDS PAGE followed by western blot with 84913-1-RR (IMPDH1 antibody) at dilution of 1:1000 incubated at room temperature for 1.5 hours. This data was developed using the same antibody clone with 84913-1-PBS in a different storage buffer formulation.



Sandwich ELISA standard curve of MP01726-1, Human IMPDH1 Recombinant Matched Antibody Pair - PBS only. 84913-1-PBS was coated to a plate as the capture antibody and incubated with serial dilutions of standard Ag17473. 84913-2-PBS was HRP conjugated as the detection antibody. Range: 0.156-10 ng/mL.



The mean IMPDH1 concentration was determined to be 27.79 ng/mL in HeLa cell extract based on a 1.00 mg/mL extract load and 45.02 ng/mL in A431 cell extract based on a 1.30 mg/mL extract load.



Biolayer interferometry (BLI) kinetic assays of 84913-1-RR against Human IMPDH1 were performed. The affinity constant is 4.41 nM.