

For Research Use Only

GPR56 Recombinant antibody, PBS Only (Capture)

Catalog Number: 84915-1-PBS



Basic Information

Catalog Number: 84915-1-PBS	GenBank Accession Number: NM_001145771.2	Purification Method: Protein A purification
Size: 1 mg/ml	GeneID (NCBI): 9289	CloneNo.: 242249A7
Source: Rabbit	UNIPROT ID: Q9Y653	
Isotype: IgG	Full Name: G protein-coupled receptor 56	
	Calculated MW: 78 kDa	

Applications

Tested Applications:
Cytometric bead array, Sandwich ELISA, Indirect ELISA,
Sample test

Species Specificity:
human

Background Information

Storage

Storage:
Store at -80°C.
The product is shipped with ice packs. Upon receipt, store it immediately at -80°C

Storage Buffer:
PBS Only

For technical support and original validation data for this product please contact:

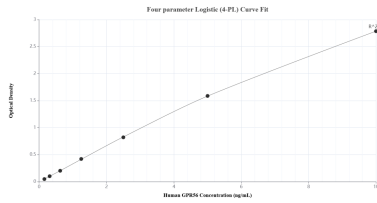
T: 4006900926

E: Proteintech-CN@ptglab.com

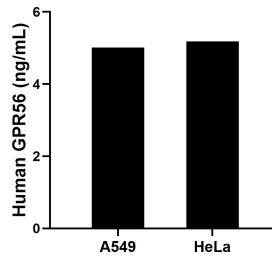
W: ptgcn.com

This product is exclusively available under Proteintech Group brand and is not available to purchase from any other manufacturer.

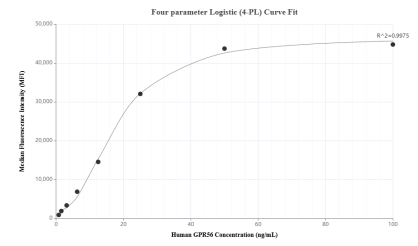
Selected Validation Data



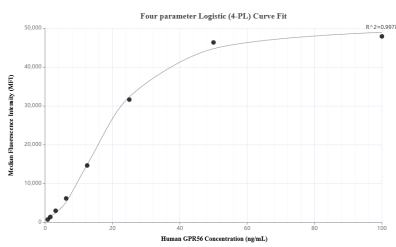
Sandwich ELISA standard curve of MP01673-1, Human GPR56 Recombinant Matched Antibody Pair - PBS only. 84915-1-PBS was coated to a plate as the capture antibody and incubated with serial dilutions of standard Eg2478. 84915-2-PBS was HRP conjugated as the detection antibody. Range: 0.156-10 ng/mL



The mean GPR56 concentration was determined to be 5.01 ng/mL in A549 cell extract based on a 1.50 mg/mL extract load and 5.18 ng/mL in HeLa cell extract based on a 1.00 mg/mL extract load.



Cytometric bead array standard curve of MP01673-2, GPR56 Recombinant Matched Antibody Pair, PBS Only. Capture antibody: 84915-1-PBS. Detection antibody: 84915-3-PBS. Standard: Eg2478. Range: 0.781-50 ng/mL



Cytometric bead array standard curve of MP01673-1, GPR56 Recombinant Matched Antibody Pair, PBS Only. Capture antibody: 84915-1-PBS. Detection antibody: 84915-2-PBS. Standard: Eg2478. Range: 0.781-50 ng/mL