

For Research Use Only

# RAD21 Recombinant antibody, PBS Only (Capture)

Catalog Number: 84920-3-PBS



## Basic Information

<b>Catalog Number:</b> 84920-3-PBS	<b>GenBank Accession Number:</b> BC050381	<b>Purification Method:</b> Protein A purification
<b>Size:</b> 1 mg/ml	<b>GeneID (NCBI):</b> 5885	<b>CloneNo.:</b> 242172F1
<b>Source:</b> Rabbit	<b>UNIPROT ID:</b> O60216	
<b>Isotype:</b> IgG	<b>Full Name:</b> RAD21 homolog (S. pombe)	
<b>Immunogen Catalog Number:</b> AG25481	<b>Calculated MW:</b> 631 aa, 72 kDa	

## Applications

**Tested Applications:**  
Cytometric bead array, Sandwich ELISA, Indirect ELISA,  
Sample test

**Species Specificity:**  
human

## Background Information

### Storage

**Storage:**  
Store at -80°C.  
**The product is shipped with ice packs. Upon receipt, store it immediately at -80°C**

**Storage Buffer:**  
PBS Only

For technical support and original validation data for this product please contact:

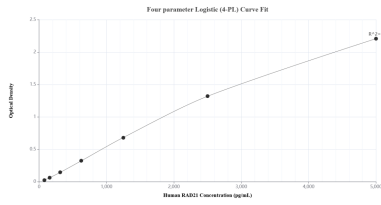
T: 4006900926

E: [Proteintech-CN@ptglab.com](mailto:Proteintech-CN@ptglab.com)

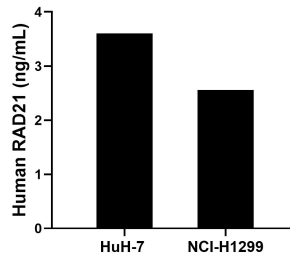
W: [ptgcn.com](http://ptgcn.com)

**This product is exclusively available under Proteintech Group brand and is not available to purchase from any other manufacturer.**

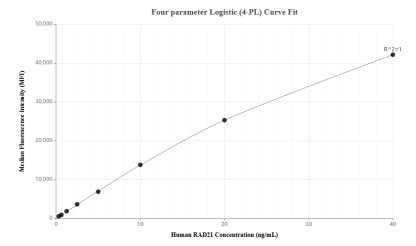
## Selected Validation Data



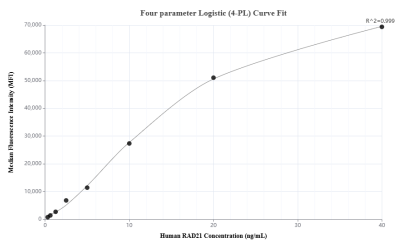
Sandwich ELISA standard curve of MP01677-2, Human RAD21 Recombinant Matched Antibody Pair - PBS only. 84920-3-PBS was coated to a plate as the capture antibody and incubated with serial dilutions of standard Ag25481. 84920-1-PBS was HRP conjugated as the detection antibody. Range: 78.1-5000 pg/mL



The mean RAD21 concentration was determined to be 3.6 ng/mL in HuH-7 cell extract based on a 1.4 mg/mL extract load and 2.6 ng/mL in NCI-H1299 cell extract based on a 1.2 mg/mL extract load.



Cytometric bead array standard curve of MP01677-2, RAD21 Recombinant Matched Antibody Pair, PBS Only. Capture antibody: 84920-3-PBS. Detection antibody: 84920-1-PBS. Standard: Ag25481. Range: 0.313-40 ng/mL



Cytometric bead array standard curve of MP01677-1, RAD21 Recombinant Matched Antibody Pair, PBS Only. Capture antibody: 84920-3-PBS. Detection antibody: 84920-2-PBS. Standard: Ag25481. Range: 0.313-40 ng/mL