

For Research Use Only

# RAD21 Recombinant monoclonal antibody, PBS Only

Catalog Number: 84920-4-PBS

Featured Product



## Basic Information

Catalog Number:

84920-4-PBS

Source:

Rabbit

Isotype:

IgG

Immunogen Catalog Number:

AG25481

GenBank Accession Number:

BC050381

GeneID (NCBI):

5885

UNIPROT ID:

O60216

Full Name:

RAD21 homolog (S. pombe)

Calculated MW:

631 aa, 72 kDa

Observed MW:

140 kDa

Purification Method:

Protein A purification

CloneNo.:

242172E3

## Applications

Tested Applications:

WB, IF/ICC, FC (Intra), Indirect ELISA

Species Specificity:

human, mouse, rat

## Background Information

RAD21, also named as Nuclear matrix protein 1, is a 631 amino acid protein, which belongs to the rad21 family. The calculated molecular weight of RAD21 is 72 kDa, but the phosphorylated RAD21 is about 120 kDa. The protein encoded by this gene is highly similar to the gene product of *Schizosaccharomyces pombe* rad21, a gene involved in the repair of DNA double-strand breaks, as well as in chromatid cohesion during mitosis. This protein is a nuclear phospho-protein, which becomes hyperphosphorylated in cell cycle M phase. The highly regulated association of this protein with mitotic chromatin specifically at the centromere region suggests its role in sister chromatid cohesion in mitotic cells.

## Storage

Storage:

Store at -80°C.

The product is shipped with ice packs. Upon receipt, store it immediately at -80°C

Storage Buffer:

PBS only, pH7.3

For technical support and original validation data for this product please contact:

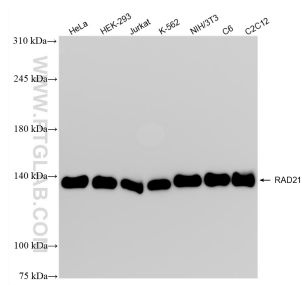
T: 4006900926

E: [Proteintech-CN@ptglab.com](mailto:Proteintech-CN@ptglab.com)

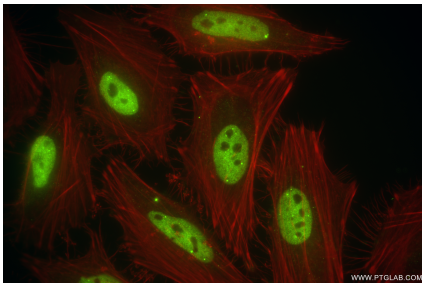
W: [ptgcn.com](http://ptgcn.com)

This product is exclusively available under Proteintech Group brand and is not available to purchase from any other manufacturer.

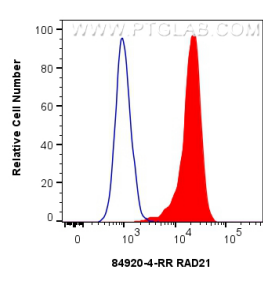
Selected Validation Data



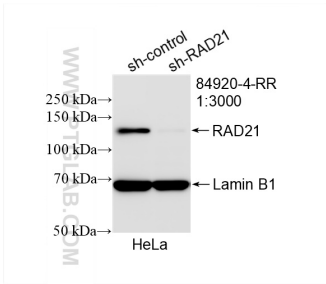
Various lysates were subjected to SDS PAGE followed by western blot with 84920-4-RR (RAD21 antibody) at dilution of 1:10000 incubated at room temperature for 1.5 hours. This data was developed using the same antibody clone with 84920-4-PBS in a different storage buffer formulation.



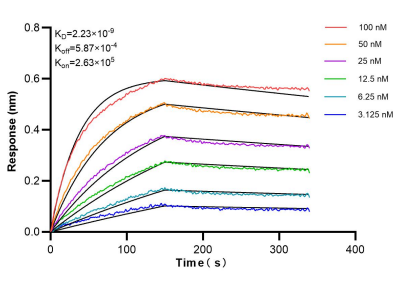
Immunofluorescent analysis of (4% PFA) fixed HeLa cells using RAD21 antibody (84920-4-RR, Clone: 242172E3) at dilution of 1:500 and CoraLite®488-Conjugated Goat Anti-Rabbit IgG(H+L) (SA00013-2), CL594-Phalloidin (red). This data was developed using the same antibody clone with 84920-4-PBS in a different storage buffer formulation.



1x10^6 Jurkat cells were intracellularly stained with 0.25 ug RAD21 Recombinant antibody (84920-4-RR, Clone:242172E3) and CoraLite®488-Conjugated Goat Anti-Rabbit IgG(H+L) (SA00013-2)(red), or 0.25 ug Rabbit IgG Isotype Control RecAb (98136-1-RR, Clone: 240953C9) (blue). Cells were fixed with 4% PFA and permeabilized with Flow Cytometry Perm Buffer. This data was developed using the same antibody clone with 84920-4-PBS in a different storage buffer formulation.



WB result of RAD21 antibody (84920-4-RR; 1:3000; incubated at room temperature for 1.5 hours) with sh-Control and sh-RAD21 transfected HeLa cells. This data was developed using the same antibody clone with 84920-4-PBS in a different storage buffer formulation.



Biolayer interferometry (BLI) kinetic assays of 84920-4-RR against Human RAD21 were performed. The affinity constant is 2.23 nM.