

For Research Use Only

JUNB Recombinant antibody, PBS Only (Capture)

Catalog Number: 84922-3-PBS



Basic Information

Catalog Number: 84922-3-PBS	GenBank Accession Number: BC004250	Purification Method: Protein A purification
Size: 1 mg/ml	GeneID (NCBI): 3726	CloneNo.: 242562F9
Source: Rabbit	UNIPROT ID: P17275	
Isotype: IgG	Full Name: jun B proto-oncogene	
Immunogen Catalog Number: AG0752	Calculated MW: 36 kDa	

Applications

Tested Applications:
Cytometric bead array, Sandwich ELISA, Indirect ELISA,
Sample test

Species Specificity:
human

Background Information

Storage

Storage:
Store at -80°C.
The product is shipped with ice packs. Upon receipt, store it immediately at -80°C

Storage Buffer:
PBS Only

For technical support and original validation data for this product please contact:

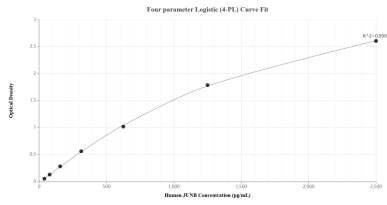
T: 4006900926

E: Proteintech-CN@ptglab.com

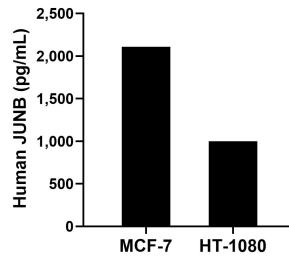
W: ptgcn.com

This product is exclusively available under Proteintech Group brand and is not available to purchase from any other manufacturer.

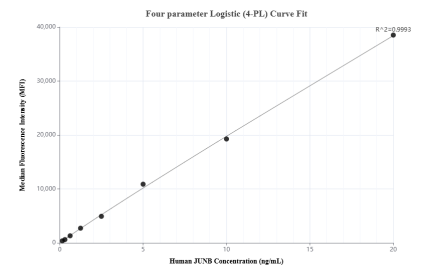
Selected Validation Data



Sandwich ELISA standard curve of MP01695-3, Human JUNB Recombinant Matched Antibody Pair - PBS only. 84922-3-PBS was coated to a plate as the capture antibody and incubated with serial dilutions of standard Ag0752. 84922-4-PBS was HRP conjugated as the detection antibody. Range: 39.1-2500 pg/mL



The mean JUNB concentration was determined to be 2,110.1 pg/mL in MCF-7 cell extract based on a 1.2 mg/mL extract load and 998.0 ng/mL in HT-1080 cell extract based on a 1.4 mg/mL extract load.



Cytometric bead array standard curve of MP01695-1, JUNB Recombinant Matched Antibody Pair, PBS Only. Capture antibody: 84922-3-PBS. Detection antibody: 84922-2-PBS. Standard: Ag0752. Range: 0.156-20 ng/mL