

For Research Use Only

# CNDP2 Recombinant antibody, PBS Only (Detector)

Catalog Number: 84924-4-PBS



## Basic Information

<b>Catalog Number:</b> 84924-4-PBS	<b>GenBank Accession Number:</b> BC001375	<b>Purification Method:</b> Protein A purification
<b>Size:</b> 1 mg/ml	<b>GeneID (NCBI):</b> 55748	<b>CloneNo.:</b> 242373D12
<b>Source:</b> Rabbit	<b>UNIPROT ID:</b> Q96KP4	
<b>Isotype:</b> IgG	<b>Full Name:</b> CNDP dipeptidase 2 (metallopeptidase M20 family)	
<b>Immunogen Catalog Number:</b> AG6684	<b>Calculated MW:</b> 53 kDa	

## Applications

**Tested Applications:**  
Sandwich ELISA, Indirect ELISA, Sample test

**Species Specificity:**  
human

## Background Information

### Storage

**Storage:**  
Store at -80°C.  
**The product is shipped with ice packs. Upon receipt, store it immediately at -80°C**

**Storage Buffer:**  
PBS Only

For technical support and original validation data for this product please contact:

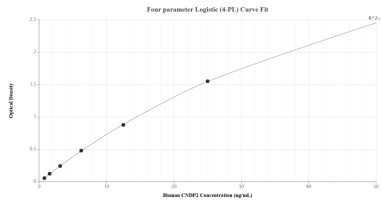
T: 4006900926

E: [Proteintech-CN@ptglab.com](mailto:Proteintech-CN@ptglab.com)

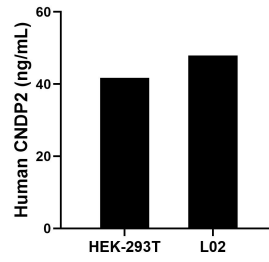
W: [ptgcn.com](http://ptgcn.com)

**This product is exclusively available under Proteintech Group brand and is not available to purchase from any other manufacturer.**

## Selected Validation Data



Sandwich ELISA standard curve of MP01668-3, Human CNDP2 Recombinant Matched Antibody Pair - PBS only. 84924-5-PBS was coated to a plate as the capture antibody and incubated with serial dilutions of standard Ag6684. 84924-4-PBS was HRP conjugated as the detection antibody. Range: 0.781-50 ng/mL



The mean CNDP2 concentration was determined to be 41.75 ng/mL in HEK-293T cell extract based on a 3.20 mg/mL extract load and 47.91 ng/mL in L02 cell extract based on a 1.30 mg/mL extract load.