

For Research Use Only

PRICKLE1 Recombinant antibody

Catalog Number: 84926-1-RR



Basic Information

Catalog Number: 84926-1-RR	GenBank Accession Number: BC114939	Purification Method: Protein A purification
Concentration: 1000 µg/ml	GeneID (NCBI): 144165	CloneNo.: 242506A8
Source: Rabbit	UNIPROT ID: Q96MT3	Recommended Dilutions: WB 1:5000-1:50000
Isotype: IgG	Full Name: prickle homolog 1 (Drosophila)	
Immunogen Catalog Number: AG18407	Calculated MW: 831 aa, 94 kDa	
	Observed MW: 94 kDa	

Applications

Tested Applications: WB, ELISA	Positive Controls: WB : MDA-MB-231 cells,
Species Specificity: human	

Background Information

PRICKLE1, also known as RILP, EPM1B, encodes a cytoplasmic protein with an N-terminal PET (Pk, Espinas, Testin) domain, three LIM domains and a C-terminal PKH (prickle homologous) domain. PRICKLE1 is expressed at the highest levels in placenta and lower levels in lung, liver, kidney and pancreas (PMID: 12525887). PRICKLE1 localizes to the nuclear membrane and has been implicated in the nuclear trafficking of the transcription repressors REST/NRSF and REST4. Mutations in PRICKLE1 have been linked to progressive myoclonus epilepsy (PMID: 18976727).

Storage

Storage:
Store at -20°C. Stable for one year after shipment.
Storage Buffer:
PBS with 0.02% sodium azide and 50% glycerol pH 7.3.
Aliquoting is unnecessary for -20°C storage

For technical support and original validation data for this product please contact:

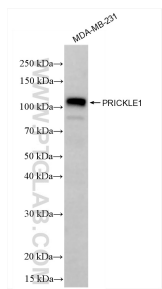
T: 4006900926

E: Proteintech-CN@ptglab.com

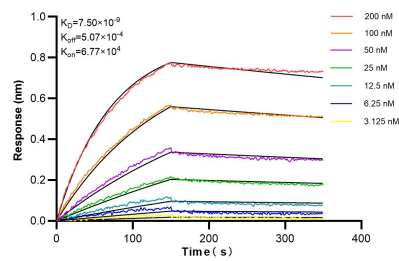
W: ptgcn.com

This product is exclusively available under Proteintech Group brand and is not available to purchase from any other manufacturer.

Selected Validation Data



MDA-MB-231 cells were subjected to SDS PAGE followed by western blot with 84926-1-RR (PRICKLE1 antibody) at dilution of 1:10000 incubated at room temperature for 1.5 hours.



Biolayer interferometry (BLI) kinetic assays of 84926-1-RR against Human PRICKLE1 were performed. The affinity constant is 7.50 nM.