

For Research Use Only

# PSMD3 Recombinant antibody

Catalog Number: 84928-2-RR



## Basic Information

**Catalog Number:**

84928-2-RR

**Size:**

1000 µg/ml

**Source:**

Rabbit

**Isotype:**

IgG

**Immunogen Catalog Number:**

AG2684

**GenBank Accession Number:**

BC012302

**GeneID (NCBI):**

5709

**UNIPROT ID:**

O43242

**Full Name:**

proteasome (prosome, macropain)

26S subunit, non-ATPase, 3

**Calculated MW:**

534 aa, 61 kDa

**Observed MW:**

61 kDa

**Purification Method:**

Protein A purification

**CloneNo.:**

242470D4

**Recommended Dilutions:**

WB 1:5000-1:50000

## Applications

**Tested Applications:**

WB, FC (Intra), ELISA

**Species Specificity:**

human

**Positive Controls:**

WB: A549 cells, HeLa cells, HEK-293 cells, U2OS cells, U-251 cells

## Background Information

PSMD3, encoding proteasome (prosome, macropain) 26S subunit, non-ATPase 3, a member of the 26S proteasome family. PSMD3 is expressed in most of the tissues according to the RNA-Seq database. It has been reported that PSMD3 genotypes are associated with white blood cell (WBC) and neutrophil counts and have interactions with dietary fatty acids and carbohydrates on glucose-related traits. PSMD3 is located at ch17q21 and encodes a protein with a molecular weight of 61 kDa (PMID: 31013812).

## Storage

**Storage:**

Store at -20°C. Stable for one year after shipment.

**Storage Buffer:**

PBS with 0.02% sodium azide and 50% glycerol pH 7.3.

Aliquoting is unnecessary for -20°C storage

For technical support and original validation data for this product please contact:

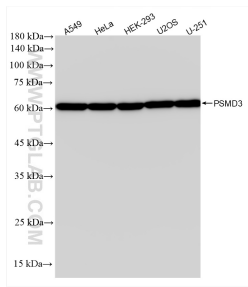
T: 4006900926

E: [Proteintech-CN@ptglab.com](mailto:Proteintech-CN@ptglab.com)

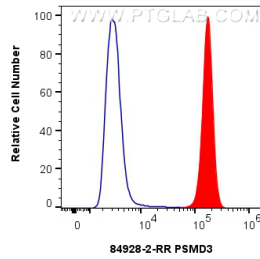
W: [ptgcn.com](http://ptgcn.com)

**This product is exclusively available under Proteintech Group brand and is not available to purchase from any other manufacturer.**

## Selected Validation Data



Various lysates were subjected to SDS PAGE followed by western blot with 84928-2-RR (PSMD3 antibody) at dilution of 1:10000 incubated at room temperature for 1.5 hours.



$1 \times 10^6$  A549 cells were intracellularly stained with 0.25  $\mu$ g PSMD3 Recombinant antibody (84928-2-RR, Clone:242470D4) and CoraLite<sup>®</sup> 488-Conjugated Goat Anti-Rabbit IgG(H+L) (SA00013-2) (red), or 0.25  $\mu$ g Rabbit IgG Isotype Control Recombinant Antibody (98136-1-RR, Clone: 240953C9) (blue). Cells were fixed with 4% PFA and permeabilized with Flow Cytometry Perm Buffer (PF00011-C).