

For Research Use Only

# TEAD4 Recombinant antibody, PBS Only (Capture/Detector)

Catalog Number: 84932-2-PBS



## Basic Information

<b>Catalog Number:</b> 84932-2-PBS	<b>GenBank Accession Number:</b> BC015497	<b>Purification Method:</b> Protein A purification
<b>Size:</b> 1 mg/ml	<b>GeneID (NCBI):</b> 7004	<b>CloneNo.:</b> 242496B7
<b>Source:</b> Rabbit	<b>UNIPROT ID:</b> Q15561	
<b>Isotype:</b> IgG	<b>Full Name:</b> TEA domain family member 4	
<b>Immunogen Catalog Number:</b> AG3059	<b>Calculated MW:</b> 434 aa, 48 kDa	

## Applications

**Tested Applications:**  
Cytometric bead array, Sandwich ELISA, Indirect ELISA,  
Sample test

**Species Specificity:**  
human

## Background Information

### Storage

**Storage:**  
Store at -80°C.  
**The product is shipped with ice packs. Upon receipt, store it immediately at -80°C**

**Storage Buffer:**  
PBS Only

For technical support and original validation data for this product please contact:

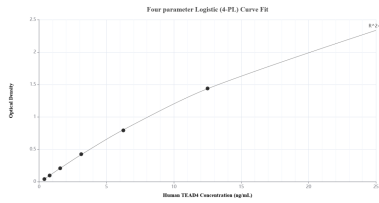
T: 4006900926

E: [Proteintech-CN@ptglab.com](mailto:Proteintech-CN@ptglab.com)

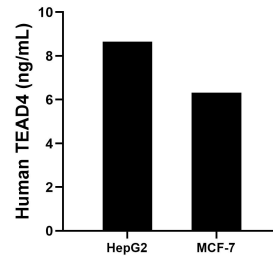
W: [ptgcn.com](http://ptgcn.com)

**This product is exclusively available under Proteintech Group brand and is not available to purchase from any other manufacturer.**

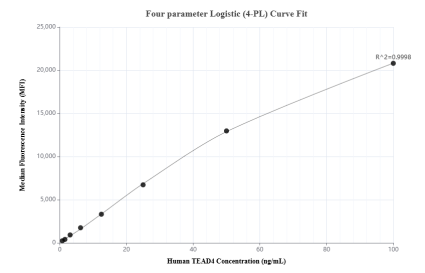
## Selected Validation Data



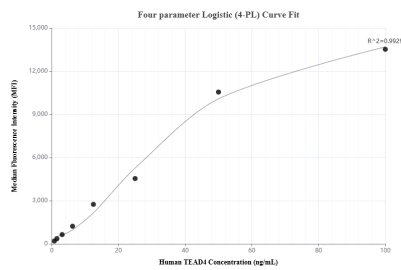
Sandwich ELISA standard curve of MP01682-3, Human TEAD4 Recombinant Matched Antibody Pair - PBS only. 84932-4-PBS was coated to a plate as the capture antibody and incubated with serial dilutions of standard Ag3059. 84932-2-PBS was HRP conjugated as the detection antibody. Range: 0.391-25 ng/mL



The mean TEAD4 concentration was determined to be 8.65 ng/mL in HepG2 cell extract based on a 1.00 mg/mL extract load and 6.31 ng/mL in MCF-7 cell extract based on a 1.20 mg/mL extract load.



Cytometric bead array standard curve of MP01682-1, TEAD4 Recombinant Matched Antibody Pair, PBS Only. Capture antibody: 84932-1-PBS. Detection antibody: 84932-2-PBS. Standard: Ag3059. Range: 0.781-100 ng/mL



Cytometric bead array standard curve of MP01682-2, TEAD4 Recombinant Matched Antibody Pair, PBS Only. Capture antibody: 84932-2-PBS. Detection antibody: 84932-3-PBS. Standard: Ag3059. Range: 0.781-100 ng/mL