

For Research Use Only

ATG12 Recombinant antibody, PBS Only (Capture)

Catalog Number: 84935-1-PBS



Basic Information

Catalog Number: 84935-1-PBS	GenBank Accession Number: BC012266	Purification Method: Protein A purification
Size: 1 mg/ml	GeneID (NCBI): 9140	CloneNo.: 242483C10
Source: Rabbit	UNIPROT ID: O94817	
Isotype: IgG	Full Name: ATG12 autophagy related 12 homolog (S. cerevisiae)	
Immunogen Catalog Number: AG1791	Calculated MW: 15 kDa	

Applications

Tested Applications:
Cytometric bead array, Sandwich ELISA, Indirect ELISA,
Sample test

Species Specificity:
human

Background Information

Storage

Storage:
Store at -80°C.
The product is shipped with ice packs. Upon receipt, store it immediately at -80°C

Storage Buffer:
PBS Only

For technical support and original validation data for this product please contact:

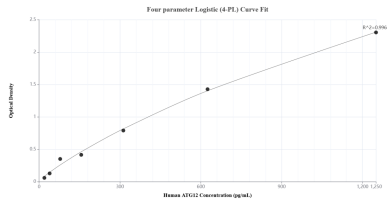
T: 4006900926

E: Proteintech-CN@ptglab.com

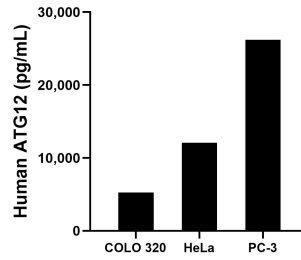
W: ptgcn.com

This product is exclusively available under Proteintech Group brand and is not available to purchase from any other manufacturer.

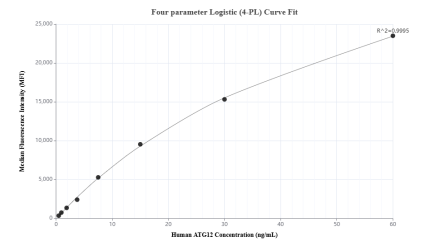
Selected Validation Data



Sandwich ELISA standard curve of MP01715-3, Human ATG12 Recombinant Matched Antibody Pair - PBS only. 84935-1-PBS was coated to a plate as the capture antibody and incubated with serial dilutions of standard Ag1791. 84935-2-PBS was HRP conjugated as the detection antibody. Range: 19.5-1250 pg/mL



The mean ATG12 concentration was determined to be 5,245.1 pg/mL in COLO 320 cell extract based on a 2.0 mg/mL extract load, 12,068.3 pg/mL in HeLa cell extract based on a 1.3 mg/mL extract load and 26,207.3 pg/mL in PC-3 cell extract based on a 2.5 mg/mL extract load.



Cytometric bead array standard curve of MP01715-1, ATG12 Recombinant Matched Antibody Pair, PBS Only. Capture antibody: 84935-1-PBS. Detection antibody: 84935-3-PBS. Standard: Ag1791. Range: 0.469-60 ng/mL