

For Research Use Only

PPP1CB Recombinant antibody, PBS Only (Capture)

Catalog Number: 84938-3-PBS



Basic Information

Catalog Number: 84938-3-PBS	GenBank Accession Number: BC002697	Purification Method: Protein A purification
Concentration: 1 mg/ml	GeneID (NCBI): 5500	CloneNo.: 242547D5
Source: Rabbit	UNIPROT ID: P62140	
Isotype: IgG	Full Name: protein phosphatase 1, catalytic subunit, beta isoform	
Immunogen Catalog Number: AG0183	Calculated MW: 37 kDa	

Applications

Tested Applications:
Cytometric bead array, Sandwich ELISA, Indirect ELISA, Sample test

Species Specificity:
human

Background Information

Storage

Storage:
Store at -80°C.
The product is shipped with ice packs. Upon receipt, store it immediately at -80°C

Storage Buffer:
PBS Only

For technical support and original validation data for this product please contact:

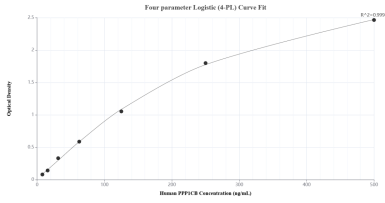
T: 4006900926

E: Proteintech-CN@ptglab.com

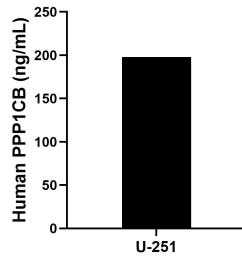
W: ptgcn.com

This product is exclusively available under Proteintech Group brand and is not available to purchase from any other manufacturer.

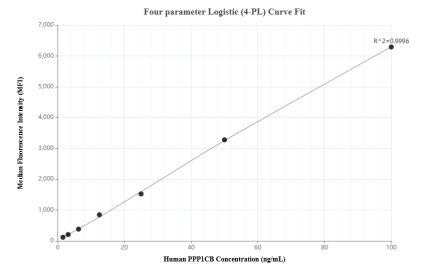
Selected Validation Data



Sandwich ELISA standard curve of MP01723-2, Human PPP1CB Recombinant Matched Antibody Pair - PBS only. 84938-3-PBS was coated to a plate as the capture antibody and incubated with serial dilutions of standard Ag0183. 84938-2-PBS was HRP conjugated as the detection antibody. Range: 7.81-500 ng/mL



The mean PPP1CB concentration was determined to be 197.98 ng/mL in U-251 cell extract based on a 1.60 mg/mL extract load.



Cytometric bead array standard curve of MP01723-2, PPP1CB Recombinant Matched Antibody Pair, PBS Only. Capture antibody: 84938-3-PBS. Detection antibody: 84938-2-PBS. Standard: Ag0183. Range: 1.56-100 ng/mL