

For Research Use Only

# PLCG1 Recombinant antibody, PBS Only (Capture)

Catalog Number: 84941-3-PBS



## Basic Information

<b>Catalog Number:</b> 84941-3-PBS	<b>GenBank Accession Number:</b> GeneID (NCBI): 5335	<b>Purification Method:</b> Protein A purification
<b>Size:</b> 1 mg/ml	<b>UNIPROT ID:</b> P19174	<b>CloneNo.:</b> 242529H1
<b>Source:</b> Rabbit	<b>Full Name:</b> phospholipase C, gamma 1	
<b>Isotype:</b> IgG	<b>Calculated MW:</b> 149 kDa	
<b>Immunogen Catalog Number:</b> AG27218		

## Applications

**Tested Applications:**  
Cytometric bead array, Indirect ELISA

**Species Specificity:**  
human

## Background Information

### Storage

**Storage:**  
Store at -80°C.  
**The product is shipped with ice packs. Upon receipt, store it immediately at -80°C**

**Storage Buffer:**  
PBS Only

For technical support and original validation data for this product please contact:

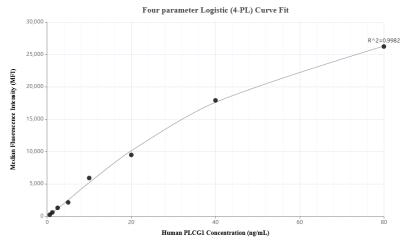
T: 4006900926

E: [Proteintech-CN@ptglab.com](mailto:Proteintech-CN@ptglab.com)

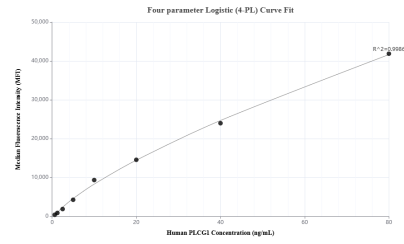
W: [ptgcn.com](http://ptgcn.com)

**This product is exclusively available under Proteintech Group brand and is not available to purchase from any other manufacturer.**

## Selected Validation Data



Cytometric bead array standard curve of MP01700-2, PLCG1 Recombinant Matched Antibody Pair, PBS Only. Capture antibody: 84941-3-PBS. Detection antibody: 84941-1-PBS. Standard: Ag27218. Range: 0.625-80 ng/mL



Cytometric bead array standard curve of MP01700-1, PLCG1 Recombinant Matched Antibody Pair, PBS Only. Capture antibody: 84941-3-PBS. Detection antibody: 84941-2-PBS. Standard: Ag27218. Range: 0.625-80 ng/mL