

For Research Use Only

RPS3 Recombinant antibody

Catalog Number: 84947-4-RR



Basic Information

Catalog Number:

84947-4-RR

Size:

1000 µg/ml

Source:

Rabbit

Isotype:

IgG

Immunogen Catalog Number:

AG7346

GenBank Accession Number:

BC003137

GeneID (NCBI):

6188

UNIPROT ID:

P23396

Full Name:

ribosomal protein S3

Calculated MW:

27 kDa

Observed MW:

30 kDa

Purification Method:

Protein A purification

CloneNo.:

242504F3

Recommended Dilutions:

WB 1:5000-1:50000

Applications

Tested Applications:

WB, ELISA

Species Specificity:

human, mouse, rat

Positive Controls:

WB : HeLa cells, HEK-293 cells, COLO 320 cells, NIH/3T3 cells, mouse brain tissue, human brain tissue,

Background Information

40S ribosomal protein S3 (RPS3), also named as SW-cl.26, is a 243 amino acid protein, which contains one KH type-2 domain and belongs to the ribosomal protein S3P family. RPS3 localizes in the cytoplasm. RPS3 is identified in a IGF2BP1-dependent mRNP granule complex, which contains untranslated mRNAs. RPS3 plays a role in repairing various DNA damage acting as a repair UV endonuclease. Nuclear accumulation of RPS3 results in an increase in DNA repair activity to some extent, thereby sustaining neuronal survival.

Storage

Storage:

Store at -20°C. Stable for one year after shipment.

Storage Buffer:

PBS with 0.02% sodium azide and 50% glycerol pH 7.3.

Aliquoting is unnecessary for -20°C storage

For technical support and original validation data for this product please contact:

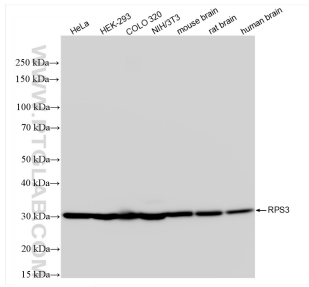
T: 4006900926

E: Proteintech-CN@ptglab.com

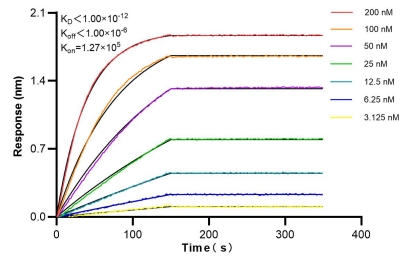
W: ptgcn.com

This product is exclusively available under Proteintech Group brand and is not available to purchase from any other manufacturer.

Selected Validation Data



Various lysates were subjected to SDS PAGE followed by western blot with 84947-4-RR (RPS3 antibody) at dilution of 1:10000 incubated at room temperature for 1.5 hours.



Biolayer interferometry (BLI) kinetic assays of 84947-4-RR against Human RPS3 were performed. The affinity constant is below 1 pM.