

For Research Use Only

Cystatin A Recombinant antibody, PBS Only (Capture/Detector)

Catalog Number: 84953-1-PBS



Basic Information

| | | |
|-------------------------------------|---------------------------------------|------------------------------------------------|
| Catalog Number: 84953-1-PBS | GenBank Accession Number: BC010379 | Purification Method: Protein A purification |
| Size: 1 mg/ml | GeneID (NCBI): 1475 | CloneNo.: 242558E1 |
| Source: Rabbit | UNIPROT ID: P01040 | |
| Isotype: IgG | Full Name: cystatin A (stefin A) | |
| Immunogen Catalog Number: AG8733 | Calculated MW: 98 aa, 11 kDa | |

Applications

Tested Applications:
Cytometric bead array, Sandwich ELISA, Indirect ELISA,
Sample test

Species Specificity:
human

Background Information

Storage

Storage:
Store at -80°C.
The product is shipped with ice packs. Upon receipt, store it immediately at -80°C

Storage Buffer:
PBS Only

For technical support and original validation data for this product please contact:

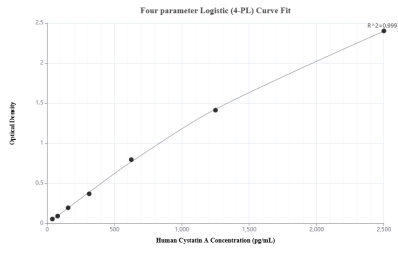
T: 4006900926

E: Proteintech-CN@ptglab.com

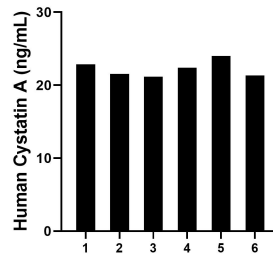
W: ptgcn.com

This product is exclusively available under Proteintech Group brand and is not available to purchase from any other manufacturer.

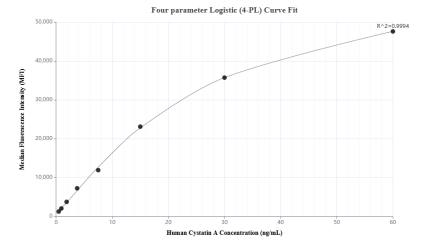
Selected Validation Data



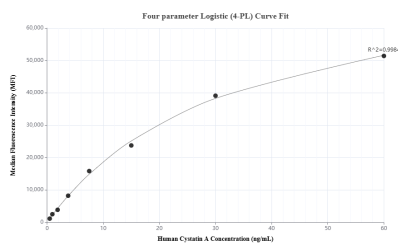
Sandwich ELISA standard curve of MP01707-1, Human Cystatin A Recombinant Matched Antibody Pair - PBS only. 84953-1-PBS was coated to a plate as the capture antibody and incubated with serial dilutions of standard Ag8733. 84953-2-PBS was HRP conjugated as the detection antibody. Range: 39.1-2500 pg/mL



Saliva of six individual healthy human donors was measured. The human Cystatin A concentration of detected samples was determined to be 22.22 ng/mL with a range of 21.18 - 24.01 ng/mL



Cytometric bead array standard curve of MP01707-1, Cystatin A Recombinant Matched Antibody Pair, PBS Only. Capture antibody: 84953-1-PBS. Detection antibody: 84953-2-PBS. Standard: Ag8733. Range: 0.469-60 ng/mL



Cytometric bead array standard curve of MP01707-2, Cystatin A Recombinant Matched Antibody Pair, PBS Only. Capture antibody: 84953-3-PBS. Detection antibody: 84953-1-PBS. Standard: Ag8733. Range: 0.469-60 ng/mL