

For Research Use Only

RCN2 Recombinant antibody

Catalog Number: 84956-4-RR



Basic Information

| | | |
|--|---|--|
| Catalog Number: 84956-4-RR | GenBank Accession Number: BC004892 | Purification Method: Protein A purification |
| Size: 1000 µg/ml | GeneID (NCBI): 5955 | CloneNo.: 242612A4 |
| Source: Rabbit | UNIPROT ID: Q14257 | Recommended Dilutions: WB 1:5000-1:50000 IF/ICC 1:200-1:800 |
| Isotype: IgG | Full Name: reticulocalbin 2, EF-hand calcium binding domain | |
| Immunogen Catalog Number: AG0247 | Calculated MW: 37 kDa | |
| | Observed MW: 55 kDa | |

Applications

| | |
|--|--|
| Tested Applications: WB, IF/ICC, ELISA | Positive Controls: |
| Species Specificity: human, mouse, rat | WB : rat liver tissue, HeLa cells, HEK-293 cells, U-251 cells, mouse liver tissue |
| | IF/ICC : HeLa cells, HepG2 cells |

Background Information

Reticulocalbin 2 (RCN2) is a Ca²⁺-binding protein that is specifically localized in the endoplasmic reticulum (ER). It is also termed ERC-55, i.e. ER calcium-binding protein of 55 kDa. It is a single copy gene and is encoded by an approximately 1900-base mRNA, which shows a ubiquitous expression pattern. The protein comprises an amino-terminal signal sequence followed by six copies of the EF-hand Ca²⁺ binding motif.

Storage

Storage:
Store at -20°C. Stable for one year after shipment.
Storage Buffer:
PBS with 0.02% sodium azide and 50% glycerol pH 7.3.
Aliquoting is unnecessary for -20°C storage

For technical support and original validation data for this product please contact:

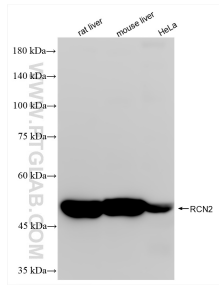
T: 4006900926

E: Proteintech-CN@ptglab.com

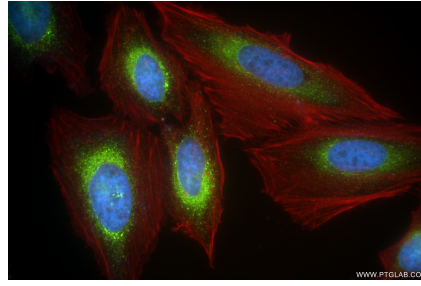
W: ptgcn.com

This product is exclusively available under Proteintech Group brand and is not available to purchase from any other manufacturer.

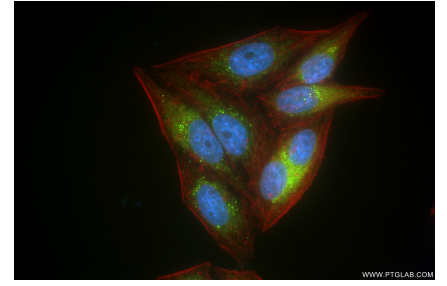
Selected Validation Data



Various lysates were subjected to SDS PAGE followed by western blot with 84956-4-RR (RCN2 antibody) at dilution of 1:10000 incubated at room temperature for 1.5 hours.



Immunofluorescent analysis of (4% PFA) fixed HeLa cells using RCN2 antibody (84956-4-RR, Clone: 242612A4) at dilution of 1:400 and CoraLite@488-Conjugated Goat Anti-Rabbit IgG(H+L) (SA00013-2), CL594-Phalloidin (red).



Immunofluorescent analysis of (4% PFA) fixed HepG2 cells using RCN2 antibody (84956-4-RR, Clone: 242612A4) at dilution of 1:400 and CoraLite@488-Conjugated Goat Anti-Rabbit IgG(H+L) (SA00013-2), CL594-Phalloidin (red).