

For Research Use Only

Bacteriophage t7 T7 RNA polymerase Recombinant antibody, PBS Only (Detector)

Catalog Number: 84959-3-PBS



Basic Information

Catalog Number: 84959-3-PBS	GenBank Accession Number: NP_041960	Purification Method: Protein A purification
Size: 1 mg/ml	GeneID (NCBI): 1261050	CloneNo.: 242544G7
Source: Rabbit	UNIPROT ID: P00573	
Isotype: IgG	Full Name: T7 RNA polymerase	
Immunogen Catalog Number: AG32001	Calculated MW: 99 kDa	

Applications

Tested Applications:
Cytometric bead array, Sandwich ELISA, Indirect ELISA,
Sample test

Species Specificity:
bacteriophage t7

Background Information

Storage

Storage:
Store at -80°C.
The product is shipped with ice packs. Upon receipt, store it immediately at -80°C

Storage Buffer:
PBS Only

For technical support and original validation data for this product please contact:

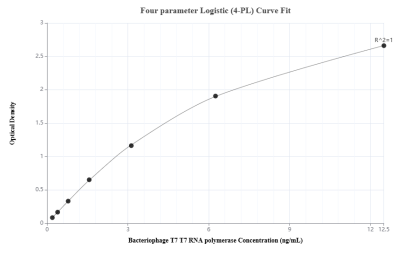
T: 4006900926

E: Proteintech-CN@ptglab.com

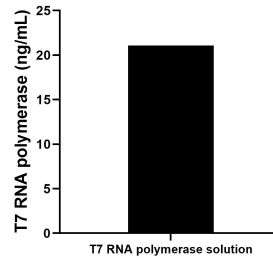
W: ptgcn.com

This product is exclusively available under Proteintech Group brand and is not available to purchase from any other manufacturer.

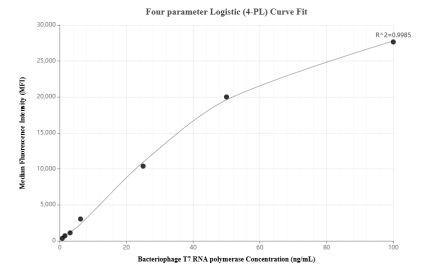
Selected Validation Data



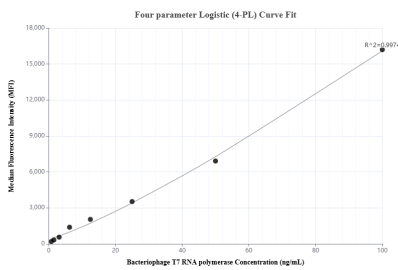
Sandwich ELISA standard curve of MP01722-2, Bacteriophage T7 T7 RNA polymerase Recombinant Matched Antibody Pair - PBS only. 84959-1-PBS was coated to a plate as the capture antibody and incubated with serial dilutions of standard Ag32001. 84959-3-PBS was HRP conjugated as the detection antibody. Range: 0.195-12.5 ng/mL



The mean T7 RNA polymerase concentration was determined to be 21.07 ng/mL in T7 RNA polymerase solution (CW3393) bought from CW BIO.



Cytometric bead array standard curve of MP01722-1, BACTERIOPHAGE T7 T7 RNA polymerase Recombinant Matched Antibody Pair, PBS Only. Capture antibody: 84959-2-PBS. Detection antibody: 84959-3-PBS. Standard: Ag32001. Range: 0.781-100 ng/mL



Cytometric bead array standard curve of MP01722-2, BACTERIOPHAGE T7 T7 RNA polymerase Recombinant Matched Antibody Pair, PBS Only. Capture antibody: 84959-1-PBS. Detection antibody: 84959-3-PBS. Standard: Ag32001. Range: 0.781-100 ng/mL