

For Research Use Only

Eg5 Recombinant antibody, PBS Only (Detector)

Catalog Number: 84966-4-PBS



Basic Information

Catalog Number: 84966-4-PBS	GenBank Accession Number: BC136474	Purification Method: Protein A purification
Size: 1 mg/ml	GeneID (NCBI): 3832	CloneNo.: 242611H8
Source: Rabbit	UNIPROT ID: P52732	
Isotype: IgG	Full Name: kinesin family member 11	
Immunogen Catalog Number: AG20001	Calculated MW: 1056 aa, 119 kDa	

Applications

Tested Applications:
Cytometric bead array, Sandwich ELISA, Indirect ELISA,
Sample test

Species Specificity:
human

Background Information

Storage

Storage:
Store at -80°C.
The product is shipped with ice packs. Upon receipt, store it immediately at -80°C

Storage Buffer:
PBS Only

For technical support and original validation data for this product please contact:

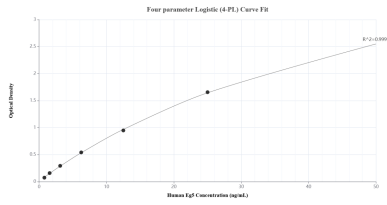
T: 4006900926

E: Proteintech-CN@ptglab.com

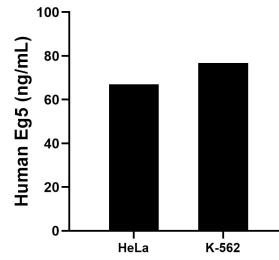
W: ptgcn.com

This product is exclusively available under Proteintech Group brand and is not available to purchase from any other manufacturer.

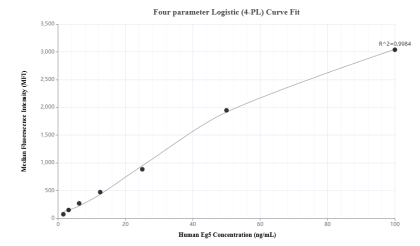
Selected Validation Data



Sandwich ELISA standard curve of MP01688-1, Human Eg5 Recombinant Matched Antibody Pair - PBS only. 84966-3-PBS was coated to a plate as the capture antibody and incubated with serial dilutions of standard Ag20001. 84966-4-PBS was HRP conjugated as the detection antibody. Range: 0.781-50 ng/mL



The mean Eg5 concentration was determined to be 67.04 ng/mL in HeLa cell extract based on a 1.00 mg/mL extract load and 76.72 ng/mL in K-562 cell extract based on a 2.50 mg/mL extract load.



Cytometric bead array standard curve of MP01688-1, Eg5 Recombinant Matched Antibody Pair, PBS Only. Capture antibody: 84966-3-PBS. Detection antibody: 84966-4-PBS. Standard: Ag20001. Range: 1.563-100 ng/mL