

For Research Use Only

# PCM1 Recombinant monoclonal antibody, PBS Only

Catalog Number: 84979-2-PBS



## Basic Information

Catalog Number: 84979-2-PBS	GenBank Accession Number: BC000453	Purification Method: Protein A purification
Source: Rabbit	GeneID (NCBI): 5108	CloneNo.: 242199D6
Isotype: IgG	UNIPROT ID: Q15154	
Immunogen Catalog Number: AG13977	Full Name: pericentriolar material 1	
	Calculated MW: 2024 aa, 228 kDa	

## Applications

**Tested Applications:**  
IHC, IF/ICC, FC (Intra), Indirect ELISA

**Species Specificity:**  
human, mouse

## Background Information

Pericentriolar material 1 (PCM1) is a component of centriolar satellites, which are electron dense granules scattered around centrosomes (PMID: 10579718). PCM1 is required for centrosome assembly and function. It acts as a scaffold to target several proteins to the centrosome in a dynein motor-dependent manner and regulate microtubular dynamics (PMID: 18762586; 12403812). It is also involved in the biogenesis of cilia (PMID: 18772192). Chromosomal aberrations involving PCM1 gene are associated with papillary thyroid carcinomas and a variety of hematological malignancies, including atypical chronic myeloid leukemia and T-cell lymphoma. (PMID: 10980597; 16091753; 15805263; 16424865).

## Storage

**Storage:**  
Store at -80°C.  
**The product is shipped with ice packs. Upon receipt, store it immediately at -80°C**

**Storage Buffer:**  
PBS only, pH7.3

For technical support and original validation data for this product please contact:

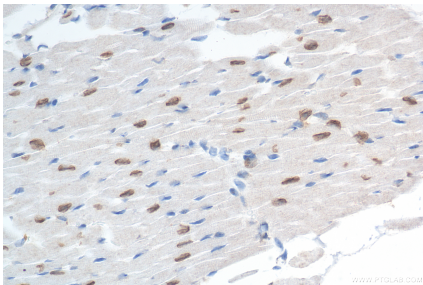
T: 4006900926

E: [Proteintech-CN@ptglab.com](mailto:Proteintech-CN@ptglab.com)

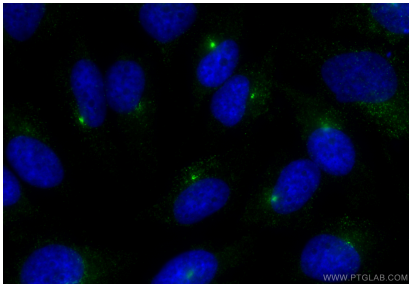
W: [ptgcn.com](http://ptgcn.com)

**This product is exclusively available under Proteintech Group brand and is not available to purchase from any other manufacturer.**

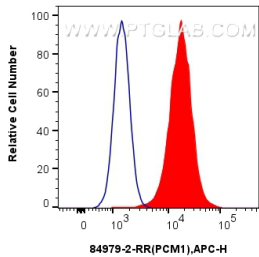
Selected Validation Data



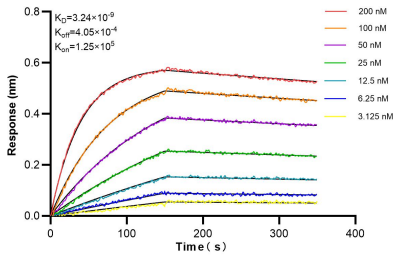
Immunohistochemical analysis of paraffin-embedded mouse heart tissue slide using 84979-2-RR (PCM1 antibody) at dilution of 1:200 (under 40x lens). Heat mediated antigen retrieval with Tris-EDTA buffer (pH 9.0). This data was developed using the same antibody clone with 84979-2-PBS in a different storage buffer formulation.



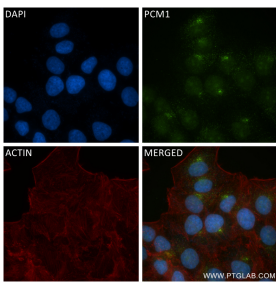
Immunofluorescent analysis of (-20°C Methanol) fixed HeLa cells using PCM1 antibody (84979-2-RR, Clone: 242199D6) at dilution of 1:400 and CoraLite®488-Conjugated Goat Anti-Rabbit IgG(H+L) (SA00013-2). This data was developed using the same antibody clone with 84979-2-PBS in a different storage buffer formulation.



1x10<sup>6</sup> K562 were intracellularly stained with 0.25 ug PCM1 Recombinant antibody (84979-2-RR, Clone:242199D6) and APC-Conjugated Goat Anti-Rabbit IgG(H+L)(red), or 0.25 ug Rabbit IgG Isotype Control Recombinant Antibody (98136-1-RR, Clone: 240953C9) (blue). Cells were fixed with 4% PFA and permeabilized with Flow Cytometry Perm Buffer. This data was developed using the same antibody clone with 84979-2-PBS in a different storage buffer formulation.



Biolayer interferometry (BLI) kinetic assays of 84979-2-RR against Human PCM1 were performed. The affinity constant is 3.24 nM.



Immunofluorescent analysis of (4% PFA) fixed HepG2 cells using PCM1 antibody (84979-2-RR, Clone: 242199D6) at dilution of 1:500 and CoraLite®488-Conjugated Goat Anti-Rabbit IgG(H+L) (SA00013-2), CL594-Phalloidin (red). This data was developed using the same antibody clone with 84979-2-PBS in a different storage buffer formulation.