

For Research Use Only

ATP1A2 Recombinant antibody, PBS Only (Detector)

Catalog Number:84999-2-PBS



Basic Information

Catalog Number: 84999-2-PBS	GenBank Accession Number: BC052271	Purification Method: Protein A purification
Size: 1 mg/ml	GeneID (NCBI): 477	CloneNo.: 242414F5
Source: Rabbit	UNIPROT ID: P50993	
Isotype: IgG	Full Name: ATPase, Na ⁺ /K ⁺ transporting, alpha 2 (+) polypeptide	
Immunogen Catalog Number: AG10489	Calculated MW: 1020 aa, 112 kDa	

Applications

Tested Applications:
Cytometric bead array, Sandwich ELISA, Indirect ELISA, Sample test

Species Specificity:
human

Background Information

Storage

Storage:
Store at -80°C.
The product is shipped with ice packs. Upon receipt, store it immediately at -80°C

Storage Buffer:
PBS Only

For technical support and original validation data for this product please contact:

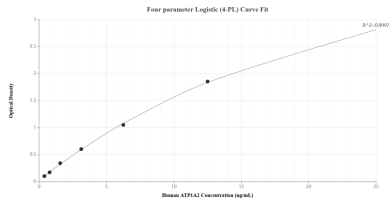
T: 4006900926

E: Proteintech-CN@ptglab.com

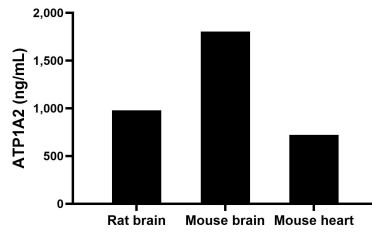
W: ptgcn.com

This product is exclusively available under Proteintech Group brand and is not available to purchase from any other manufacturer.

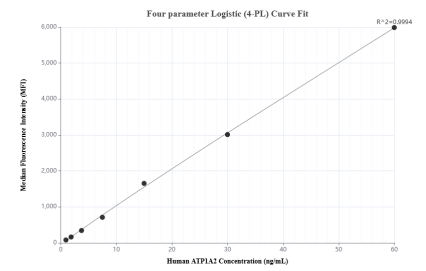
Selected Validation Data



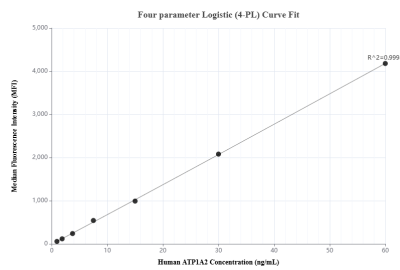
Sandwich ELISA standard curve of MP01738-1, Human ATP1A2 Recombinant Matched Antibody Pair - PBS only. 84999-3-PBS was coated to a plate as the capture antibody and incubated with serial dilutions of standard Ag10489. 84999-2-PBS was HRP conjugated as the detection antibody. Range: 0.391-25 ng/mL



The mean ATP1A2 concentration was determined to be 976.80 ng/mL in rat brain extract based on a 1.60 mg/mL extract load, 1,802.51 ng/mL in mouse brain cell extract based on a 2.20 mg/mL extract load and 719.92 ng/mL in mouse heart cell extract based on a 1.40 mg/mL extract load.



Cytometric bead array standard curve of MP01738-1, ATP1A2 Recombinant Matched Antibody Pair, PBS Only. Capture antibody: 84999-3-PBS. Detection antibody: 84999-2-PBS. Standard: Ag10489. Range: 0.938-60 ng/mL



Cytometric bead array standard curve of MP01738-2, ATP1A2 Recombinant Matched Antibody Pair, PBS Only. Capture antibody: 84999-1-PBS. Detection antibody: 84999-2-PBS. Standard: Ag10489. Range: 0.938-60 ng/mL