

For Research Use Only

DCBLD2 Recombinant antibody, PBS Only (Detector)

Catalog Number:85000-2-PBS



Basic Information

Catalog Number: 85000-2-PBS	GenBank Accession Number: BC029658	Purification Method: Protein A purification
Size: 1 mg/ml	GeneID (NCBI): 131566	CloneNo.: 242604F5
Source: Rabbit	UNIPROT ID: Q96PD2	
Isotype: IgG	Full Name: discoidin, CUB and LCCL domain containing 2	
Immunogen Catalog Number: AG32823	Calculated MW: 775 aa, 89 kDa	

Applications

Tested Applications:
Cytometric bead array, Sandwich ELISA, Indirect ELISA, Sample test

Species Specificity:
human

Background Information

Storage

Storage:
Store at -80°C.
The product is shipped with ice packs. Upon receipt, store it immediately at -80°C

Storage Buffer:
PBS Only

For technical support and original validation data for this product please contact:

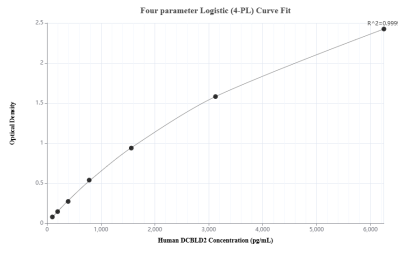
T: 4006900926

E: Proteintech-CN@ptglab.com

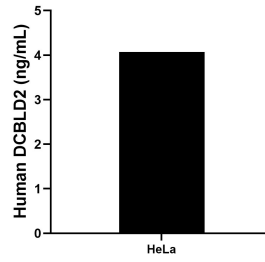
W: ptgcn.com

This product is exclusively available under Proteintech Group brand and is not available to purchase from any other manufacturer.

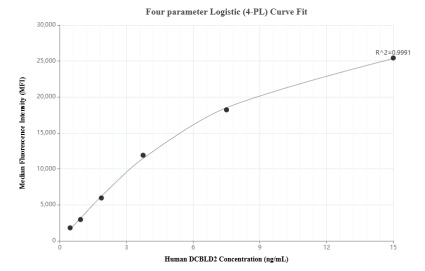
Selected Validation Data



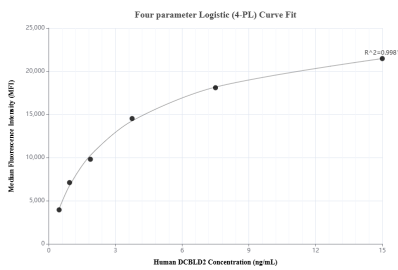
Sandwich ELISA standard curve of MP01733-1, Human DCBLD2 Recombinant Matched Antibody Pair - PBS only. 85000-3-PBS was coated to a plate as the capture antibody and incubated with serial dilutions of standard Ag32823. 85000-2-PBS was HRP conjugated as the detection antibody. Range: 97.7-6250 pg/mL



The mean DCBLD2 concentration was determined to be 4.07 ng/mL in HeLa cell extract based on a 1.5 mg/mL extract load.



Cytometric bead array standard curve of MP01733-1, DCBLD2 Recombinant Matched Antibody Pair, PBS Only. Capture antibody: 85000-3-PBS. Detection antibody: 85000-2-PBS. Standard: Ag32823. Range: 0.469-15 ng/mL



Cytometric bead array standard curve of MP01733-2, DCBLD2 Recombinant Matched Antibody Pair, PBS Only. Capture antibody: 85000-1-PBS. Detection antibody: 85000-2-PBS. Standard: Ag32823. Range: 0.469-15 ng/mL