

For Research Use Only

Phospho-Cardiac Troponin I (Ser23/24) Recombinant antibody, PBS Only

Catalog Number: 85002-1-PBS



Basic Information

Catalog Number:

85002-1-PBS

Size:

1 mg/ml

Source:

Rabbit

Isotype:

IgG

GenBank Accession Number:

BC096165

GeneID (NCBI):

7137

UNIPROT ID:

P19429

Full Name:

troponin I type 3 (cardiac)

Calculated MW:

210 aa, 24 kDa

Observed MW:

26 kDa

Purification Method:

Protein A purification

CloneNo.:

241982B1

Applications

Tested Applications:

WB, Indirect ELISA

Species Specificity:

human, mouse

Background Information

Cardiac Troponin I (cTnI) is produced by cardiac muscle. To date, most investigative effort in phosphorylation mediated regulation of cTnI function has focused on the actions of PKA and PKC. Evidence from studies in a variety of systems, ranging from reconstituted myofilament proteins to cultured myocytes or transgenic animals with heterologous expression of modified cTnI proteins, indicates that PKA-mediated functional effects (eg, decreased myofilament Ca²⁺ sensitivity) are mediated principally through the phosphorylation of Ser22/23 (equivalent to Ser23/24, including the initiating Met, in the rodent sequence) within the unique N-terminal extension of cTnI. (PMID: 15514163)

Storage

Storage:

Store at -80°C.

The product is shipped with ice packs. Upon receipt, store it immediately at -80°C

Storage Buffer:

PBS Only

For technical support and original validation data for this product please contact:

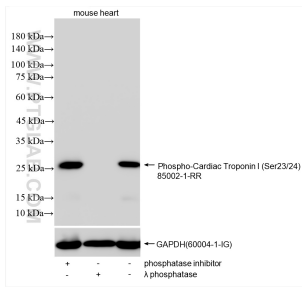
T: 4006900926

E: Proteintech-CN@ptglab.com

W: ptgcn.com

This product is exclusively available under Proteintech Group brand and is not available to purchase from any other manufacturer.

Selected Validation Data



Non-treated mouse heart tissue, phosphatase inhibitor treated mouse heart tissue and λ phosphatase treated mouse heart tissue were subjected to SDS PAGE followed by western blot with 85001-1-RR (Phospho-Cardiac Troponin I (Ser23/24) antibody at dilution of 1:10000 incubated at room temperature for 1.5 hours. The membrane was stripped and re-blotted with GAPDH (60004-1-Ig) antibody as a loading control. This data was developed using the same antibody clone with 85002-1-

