

For Research Use Only

# MAS1L Recombinant antibody, PBS Only

Catalog Number: 85003-1-PBS



## Basic Information

<b>Catalog Number:</b> 85003-1-PBS	<b>GenBank Accession Number:</b> NM_052967	<b>Purification Method:</b> Protein A purification
<b>Size:</b> 1 mg/ml	<b>GeneID (NCBI):</b> 116511	<b>CloneNo.:</b> 242360D1
<b>Source:</b> Rabbit	<b>UNIPROT ID:</b> P35410	
<b>Isotype:</b> IgG	<b>Full Name:</b> MAS1 oncogene-like	
	<b>Calculated MW:</b> 42 kDa	
	<b>Observed MW:</b> 42 kDa	

## Applications

**Tested Applications:**  
WB, Indirect ELISA

**Species Specificity:**  
human, mouse

## Background Information

MAS1L, also named MRG, belongs to the G-protein coupled receptor 1 family and Mas subfamily.

## Storage

**Storage:**  
Store at -80°C.  
**The product is shipped with ice packs. Upon receipt, store it immediately at -80°C**

**Storage Buffer:**  
PBS Only

For technical support and original validation data for this product please contact:

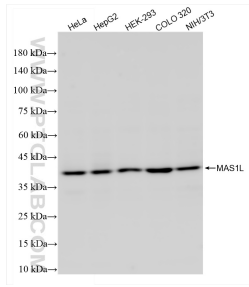
T: 4006900926

E: [Proteintech-CN@ptglab.com](mailto:Proteintech-CN@ptglab.com)

W: [ptgcn.com](http://ptgcn.com)

**This product is exclusively available under Proteintech Group brand and is not available to purchase from any other manufacturer.**

## Selected Validation Data



Various lysates were subjected to SDS PAGE followed by western blot with 85003-1-RR (MAS1L antibody) at dilution of 1:5000 incubated at room temperature for 1.5 hours. This data was developed using the same antibody clone with 85003-1-PBS in a different storage buffer formulation.