

For Research Use Only

C1R Recombinant antibody, PBS Only (Capture)

Catalog Number:85029-1-PBS



Basic Information

Catalog Number: 85029-1-PBS	GenBank Accession Number: BC035220	Purification Method: Protein A purification
Size: 1 mg/ml	GeneID (NCBI): 715	CloneNo.: 242596B12
Source: Rabbit	UNIPROT ID: P00736	
Isotype: IgG	Full Name: complement component 1, r subcomponent	
Immunogen Catalog Number: AG11390	Calculated MW: 705 aa, 80 kDa	

Applications

Tested Applications:
Cytometric bead array, Sandwich ELISA, Indirect ELISA,
Sample test

Species Specificity:
human

Background Information

Storage

Storage:
Store at -80°C.
The product is shipped with ice packs. Upon receipt, store it immediately at -80°C

Storage Buffer:
PBS Only

For technical support and original validation data for this product please contact:

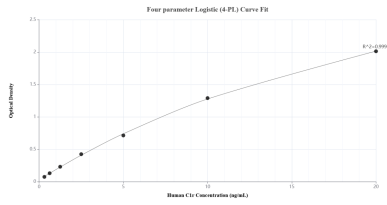
T: 4006900926

E: Proteintech-CN@ptglab.com

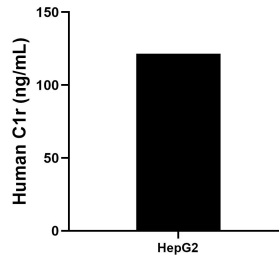
W: ptgcn.com

This product is exclusively available under Proteintech Group brand and is not available to purchase from any other manufacturer.

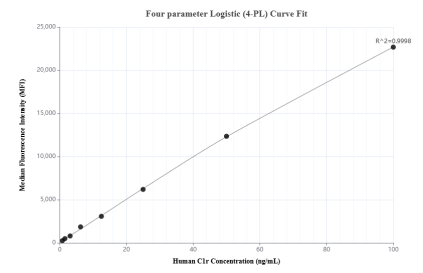
Selected Validation Data



Sandwich ELISA standard curve of MP01761-1, Human C1r Recombinant Matched Antibody Pair - PBS only. 85029-1-PBS was coated to a plate as the capture antibody and incubated with serial dilutions of standard Ag11390. 85029-3-PBS was HRP conjugated as the detection antibody. Range: 0.313-20 ng/mL



The mean C1r concentration was determined to be 121.59 ng/mL in HepG2 cell extract based on a 1.00 mg/mL extract load.



Cytometric bead array standard curve of MP01761-1, C1r Recombinant Matched Antibody Pair, PBS Only. Capture antibody: 85029-1-PBS. Detection antibody: 85029-3-PBS. Standard: Ag11390. Range: 0.781-100 ng/mL