

For Research Use Only

NME1 Recombinant antibody, PBS Only (Capture/Detector)

Catalog Number:85038-2-PBS



Basic Information

Catalog Number: 85038-2-PBS	GenBank Accession Number: BC018994	Purification Method: Protein A purification
Size: 1 mg/ml	GeneID (NCBI): 4830	CloneNo.: 242670C7
Source: Rabbit	UNIPROT ID: P15531	
Isotype: IgG	Full Name: non-metastatic cells 1, protein (NM23A) expressed in	
Immunogen Catalog Number: AG1548	Calculated MW: 17 kDa	

Applications

Tested Applications:
Cytometric bead array, Sandwich ELISA, Indirect ELISA,
Sample test

Species Specificity:
human

Background Information

Storage

Storage:
Store at -80°C.
The product is shipped with ice packs. Upon receipt, store it immediately at -80°C

Storage Buffer:
PBS Only

For technical support and original validation data for this product please contact:

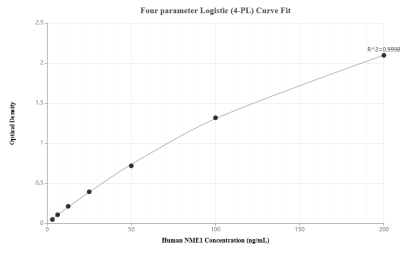
T: 4006900926

E: Proteintech-CN@ptglab.com

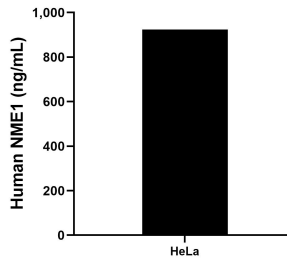
W: ptgcn.com

This product is exclusively available under Proteintech Group brand and is not available to purchase from any other manufacturer.

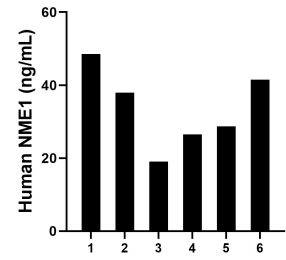
Selected Validation Data



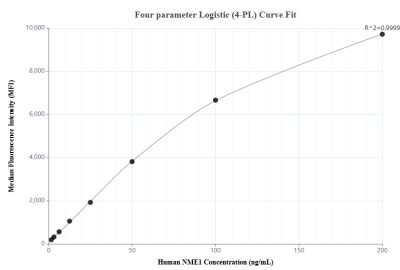
Sandwich ELISA standard curve of MP01750-3, Human NME1 Recombinant Matched Antibody Pair - PBS only. 85038-2-PBS was coated to a plate as the capture antibody and incubated with serial dilutions of standard Ag1548. 85038-4-PBS was HRP conjugated as the detection antibody. Range: 3.13-200 ng/mL



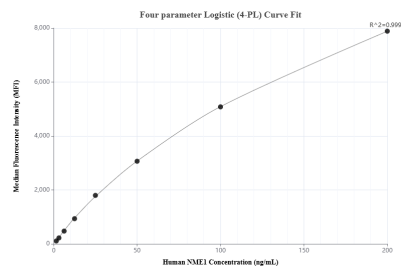
The mean NME1 concentration was determined to be 924.43 ng/mL in HeLa cell extract based on a 1.5 mg/mL extract load.



Serum of six individual healthy human donors was measured. The human NME1 concentration of detected samples was determined to be 33.71 ng/mL with a range of 19.03 - 48.55 ng/mL.



Cytometric bead array standard curve of MP01750-1, NME1 Recombinant Matched Antibody Pair, PBS Only. Capture antibody: 85038-3-PBS. Detection antibody: 85038-2-PBS. Standard: Ag1548. Range: 1.563-200 ng/mL



Cytometric bead array standard curve of MP01750-2, NME1 Recombinant Matched Antibody Pair, PBS Only. Capture antibody: 85038-1-PBS. Detection antibody: 85038-2-PBS. Standard: Ag1548. Range: 1.563-200 ng/mL