

For Research Use Only

NME1 Recombinant antibody

Catalog Number: 85038-7-RR



Basic Information

Catalog Number:

85038-7-RR

Concentration:

1000 ug/ml

Source:

Rabbit

Isotype:

IgG

Immunogen Catalog Number:

AG1548

GenBank Accession Number:

BC018994

GeneID (NCBI):

4830

UNIPROT ID:

P15531

Full Name:

non-metastatic cells 1, protein
(NM23A) expressed in

Calculated MW:

17 kDa

Observed MW:

16-20 kDa

Purification Method:

Protein A purification

CloneNo.:

242670D5

Recommended Dilutions:

WB 1:5000-1:50000

IF/ICC 1:200-1:800

Applications

Tested Applications:

WB, IF/ICC, FC (Intra), ELISA

Species Specificity:

human, mouse, rat

Positive Controls:

WB : HeLa cells, NIH/3T3 cells, HepG2 cells, A549 cells,
MCF-7 cells, Jurkat cells, C6 cells

IF/ICC : MCF-7 cells,

Background Information

NME1 is also named as NDPKA(Nucleoside diphosphate kinase A), NM23(Metastasis inhibition factor nm23),GAAD(Granzyme A-activated DNase) and belongs to the NDK family.It is a major role in the synthesis of nucleoside triphosphates other than ATP and required for neural development including neural patterning and cell fate determination.It has 3 isoforms produced by alternative splicing.

Storage

Storage:

Store at -20°C. Stable for one year after shipment.

Storage Buffer:

PBS with 0.02% sodium azide and 50% glycerol pH 7.3.

Aliquoting is unnecessary for -20°C storage

For technical support and original validation data for this product please contact:

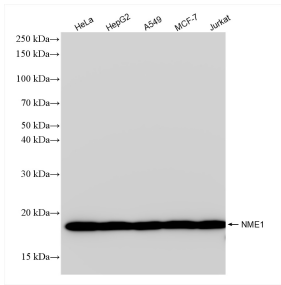
T: 4006900926

E: Proteintech-CN@ptglab.com

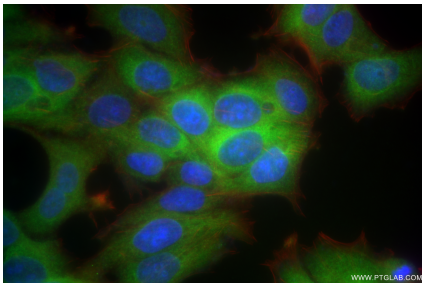
W: ptgcn.com

This product is exclusively available under Proteintech Group brand and is not available to purchase from any other manufacturer.

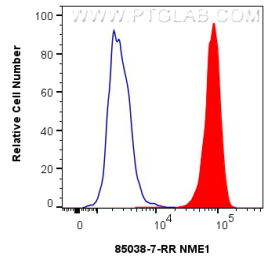
Selected Validation Data



Various lysates were subjected to SDS PAGE followed by western blot with 85038-7-RR (NME1 antibody) at dilution of 1:10000 incubated at room temperature for 1.5 hours.



Immunofluorescent analysis of (-20°C Ethanol) fixed MCF-7 cells using NME1 antibody (85038-7-RR, Clone: 242670D5) at dilution of 1:400 and CoraLite® 488-Conjugated Goat Anti-Rabbit IgG(H+L) (SA00013-2), CL594-Phalloidin (red).



1x10⁶ HepG2 cells were intracellularly stained with 0.25 ug NME1 Recombinant antibody (85038-7-RR, Clone:242670D5) and CoraLite® 488-Conjugated Goat Anti-Rabbit IgG(H+L) (SA00013-2) (red), or 0.25 ug Rabbit IgG Isotype Control RecAb (98136-1-RR, Clone: 240953C9) (blue). Cells were fixed with 4% PFA and permeabilized with Flow Cytometry Perm Buffer (PF00011-C).