

For Research Use Only

# EGFR Recombinant antibody, PBS Only (Capture/Detector)

Catalog Number: 85039-3-PBS



## Basic Information

Catalog Number:

85039-3-PBS

Size:

1 mg/ml

Source:

Rabbit

Isotype:

IgG

GenBank Accession Number:

NM\_005228.5

GeneID (NCBI):

1956

UNIPROT ID:

P00533

Full Name:

epidermal growth factor receptor  
(erythroblastic leukemia viral (v-erb-  
b) oncogene homolog, avian)

Calculated MW:

134kd

Purification Method:

Protein A purification

CloneNo.:

242684F3

## Applications

Tested Applications:

Cytometric bead array, Sandwich ELISA, Indirect ELISA,  
Sample test

Species Specificity:

human

## Background Information

### Storage

Storage:

Store at -80°C.

**The product is shipped with ice packs. Upon receipt, store it immediately at -80°C**

Storage Buffer:

PBS Only

For technical support and original validation data for this product please contact:

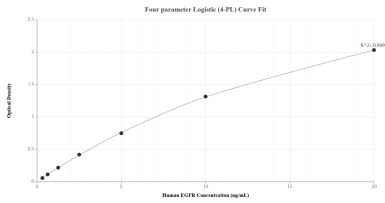
T: 4006900926

E: [Proteintech-CN@ptglab.com](mailto:Proteintech-CN@ptglab.com)

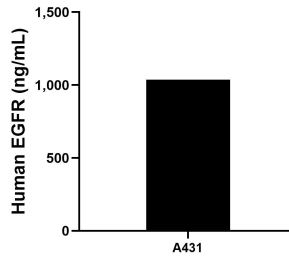
W: [ptgcn.com](http://ptgcn.com)

**This product is exclusively available under Proteintech Group brand and is not available to purchase from any other manufacturer.**

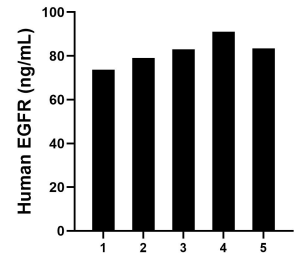
## Selected Validation Data



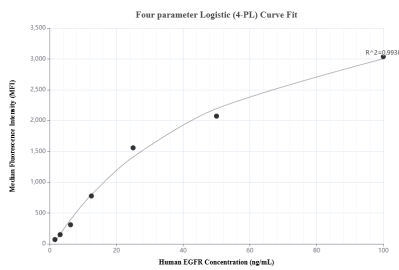
Sandwich ELISA standard curve of MP01744-3, Human EGFR Recombinant Matched Antibody Pair - PBS only. 85039-1-PBS was coated to a plate as the capture antibody and incubated with serial dilutions of standard Eg0204. 85039-3-PBS was HRP conjugated as the detection antibody. Range: 0.313-20 ng/mL



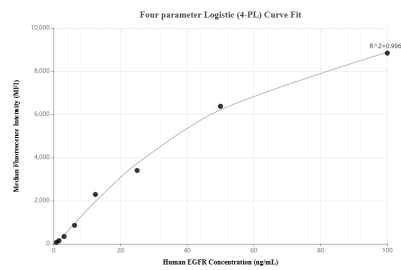
A431 cells were cultured in DMEM supplemented with 10% fetal bovine serum, 2.5 mM L-glutamine, 100 U/mL penicillin, and 100 μg/mL streptomycin sulfate. An aliquot of the cell culture supernate was removed, assayed for human EGFR, and measured 1,036.46 ng/mL



Serum of five individual healthy human donors was measured. The EGFR concentration of detected samples was determined to be 82.02 ng/mL with a range of 73.67-90.99 ng/mL



Cytometric bead array standard curve of MP01744-2, EGFR Recombinant Matched Antibody Pair, PBS Only. Capture antibody: 85039-3-PBS. Detection antibody: 85039-1-PBS. Standard: Eg0204. Range: 1.563-100 ng/mL



Cytometric bead array standard curve of MP01744-1, EGFR Recombinant Matched Antibody Pair, PBS Only. Capture antibody: 85039-3-PBS. Detection antibody: 85039-2-PBS. Standard: Eg0204. Range: 0.781-100 ng/mL