

For Research Use Only

# PRPH2 Recombinant antibody

Catalog Number:85043-1-RR



## Basic Information

<b>Catalog Number:</b> 85043-1-RR	<b>GenBank Accession Number:</b> BC074720	<b>Purification Method:</b> Protein A purification
<b>Size:</b> 1000 µg/ml	<b>GeneID (NCBI):</b> 5961	<b>CloneNo.:</b> 242170F4
<b>Source:</b> Rabbit	<b>UNIPROT ID:</b> P23942	<b>Recommended Dilutions:</b> WB 1:5000-1:50000 IHC 1:200-1:800 IF-P 1:400-1:1600
<b>Isotype:</b> IgG	<b>Full Name:</b> peripherin 2 (retinal degeneration, slow)	
<b>Immunogen Catalog Number:</b> AG12555	<b>Calculated MW:</b> 346 aa, 39 kDa	
	<b>Observed MW:</b> 30-40 kDa	

## Applications

### Tested Applications:

WB, IHC, IF-P, ELISA

### Species Specificity:

human, mouse, rat

**Note-IHC: suggested antigen retrieval with TE buffer pH 9.0; (\*) Alternatively, antigen retrieval may be performed with citrate buffer pH 6.0**

### Positive Controls:

WB : mouse eye tissue, rat eye tissue

IHC : mouse eye tissue,

IF-P : mouse eye tissue,

## Background Information

Peripherin-2 (PRPH2), also known as retinal degeneration slow protein (RDS), is a photoreceptor-specific tetraspanin protein implicated in outer segment disk morphogenesis. It may function as an adhesion molecule involved in the stabilization and compaction of outer segment disks or in the maintenance of the curvature of the rim. Mutations in peripherin-2 are responsible for various retinal degenerative diseases including autosomal dominant retinitis pigmentosa (ADRP).

## Storage

### Storage:

Store at -20°C. Stable for one year after shipment.

### Storage Buffer:

PBS with 0.02% sodium azide and 50% glycerol pH 7.3.

Aliquoting is unnecessary for -20°C storage

For technical support and original validation data for this product please contact:

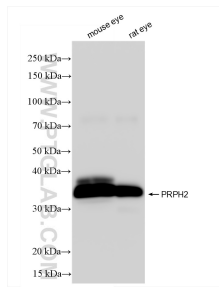
T: 4006900926

E: Proteintech-CN@ptglab.com

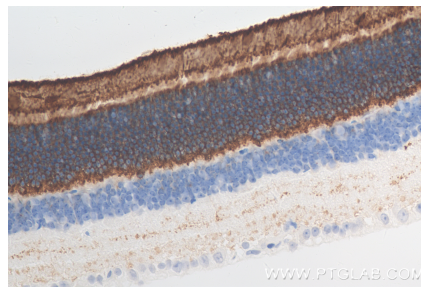
W: ptgcn.com

**This product is exclusively available under Proteintech Group brand and is not available to purchase from any other manufacturer.**

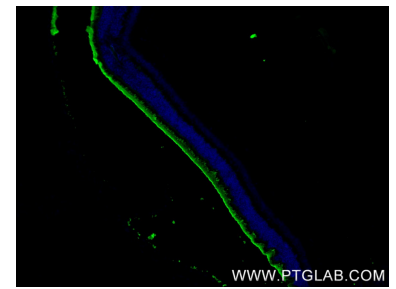
## Selected Validation Data



Various lysates were subjected to SDS PAGE followed by western blot with 85043-1-RR (PRPH2 antibody) at dilution of 1:12000 incubated at room temperature for 1.5 hours.



Immunohistochemical analysis of paraffin-embedded mouse eye tissue slide using 85043-1-RR (PRPH2 antibody) at dilution of 1:400 (under 40x lens). Heat mediated antigen retrieval with Tris-EDTA buffer (pH 9.0).



Immunofluorescent analysis of (4% PFA) fixed paraffin-embedded mouse eye tissue using PRPH2 antibody (85043-1-RR, Clone: 242170F4) at dilution of 1:800 and CoraLite@488-Conjugated Goat Anti-Rabbit IgG(H+L) (SA00013-2). Heat mediated antigen retrieval with Tris-EDTA buffer (pH 9.0).