

For Research Use Only

# ERBB3 Recombinant antibody, PBS Only (Detector)

Catalog Number: 85053-1-PBS



## Basic Information

<b>Catalog Number:</b> 85053-1-PBS	<b>GenBank Accession Number:</b> BC082992	<b>Purification Method:</b> Protein A purification
<b>Size:</b> 1 mg/ml	<b>GeneID (NCBI):</b> 2065	<b>CloneNo.:</b> 242605B8
<b>Source:</b> Rabbit	<b>UNIPROT ID:</b> P21860	
<b>Isotype:</b> IgG	<b>Full Name:</b> v-erb-b2 erythroblastic leukemia viral oncogene homolog 3 (avian)	

## Applications

**Tested Applications:**  
Cytometric bead array, Sandwich ELISA, Indirect ELISA,  
Sample test

**Species Specificity:**  
human

## Background Information

### Storage

**Storage:**  
Store at -80°C.  
**The product is shipped with ice packs. Upon receipt, store it immediately at -80°C**

**Storage Buffer:**  
PBS Only

For technical support and original validation data for this product please contact:

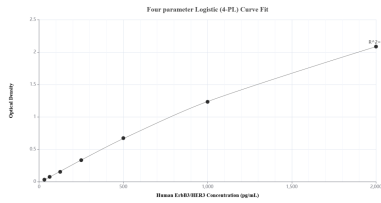
T: 4006900926

E: Proteintech-CN@ptglab.com

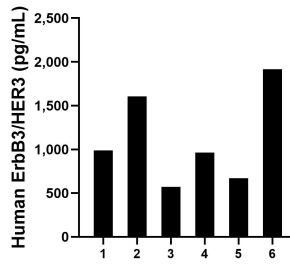
W: ptgcn.com

**This product is exclusively available under Proteintech Group brand and is not available to purchase from any other manufacturer.**

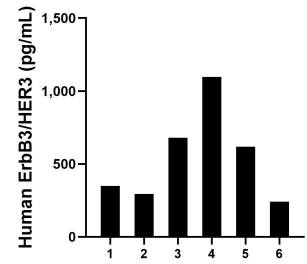
## Selected Validation Data



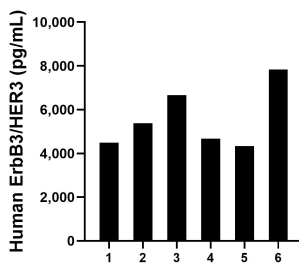
Sandwich ELISA standard curve of MP01777-1, Human ErbB3/HER3 Recombinant Matched Antibody Pair - PBS only. 85053-2-PBS was coated to a plate as the capture antibody and incubated with serial dilutions of standard Eg2245. 85053-1-PBS was HRP conjugated as the detection antibody. Range: 31.3-2000 pg/mL



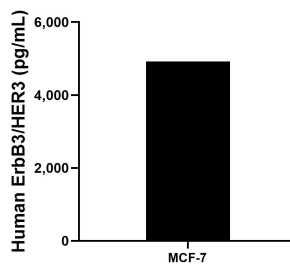
Saliva of six individual healthy human donors was measured. The ErbB3/HER3 concentration of detected samples was determined to be 1,118.6 pg/mL with a range of 572.4-1,916.5 pg/mL



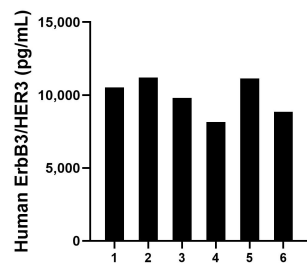
Urine of six individual healthy human donors was measured. The ErbB3/HER3 concentration of detected samples was determined to be 546.4 pg/mL with a range of 240.4-1,095.7 pg/mL



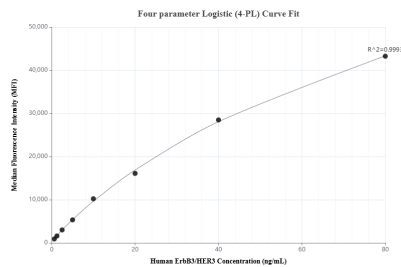
Human milk of six individual healthy human donors was measured. The ErbB3/HER3 concentration of detected samples was determined to be 5,561.2 pg/mL with a range of 4,339.8-7,839.0 pg/mL



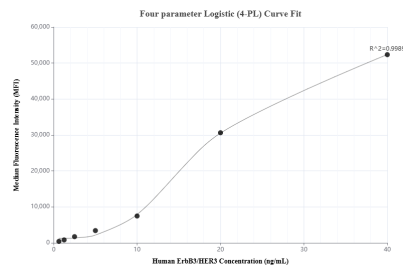
MCF-7 cells were cultured in DMEM supplemented with 10% fetal bovine serum, 2.5 mM L-glutamine, 100 U/mL penicillin, and 100 μg/mL streptomycin sulfate. An aliquot of the cell culture supernatant was removed, assayed for human ErbB3/HER3, and measured 4,918.4 pg/mL



Serum of six individual healthy human donors was measured. The ErbB3/HER3 concentration of detected samples was determined to be 9,941.5 pg/mL with a range of 8,149.4-11,207.9 pg/mL



Cytometric bead array standard curve of MP01777-1, ErbB3/HER3 Recombinant Matched Antibody Pair, PBS Only. Capture antibody: 85053-2-PBS. Detection antibody: 85053-1-PBS. Standard: Eg2245. Range: 0.625-80 ng/mL



Cytometric bead array standard curve of MP01777-2, ErbB3/HER3 Recombinant Matched Antibody Pair, PBS Only. Capture antibody: 85053-3-PBS. Detection antibody: 85053-1-PBS. Standard: Eg2245. Range: 0.625-40 ng/mL