

For Research Use Only

ERBB3 Recombinant antibody, PBS Only (Capture)

Catalog Number: 85053-2-PBS



Basic Information

Catalog Number: 85053-2-PBS	GenBank Accession Number: BC082992	Purification Method: Protein A purification
Size: 1 mg/ml	GeneID (NCBI): 2065	CloneNo.: 242605C4
Source: Rabbit	UNIPROT ID: P21860	
Isotype: IgG	Full Name: v-erb-b2 erythroblastic leukemia viral oncogene homolog 3 (avian)	

Applications

Tested Applications:
Cytometric bead array, Sandwich ELISA, Indirect ELISA,
Sample test

Species Specificity:
human

Background Information

Storage

Storage:
Store at -80°C.
The product is shipped with ice packs. Upon receipt, store it immediately at -80°C

Storage Buffer:
PBS Only

For technical support and original validation data for this product please contact:

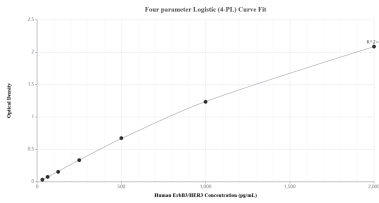
T: 4006900926

E: Proteintech-CN@ptglab.com

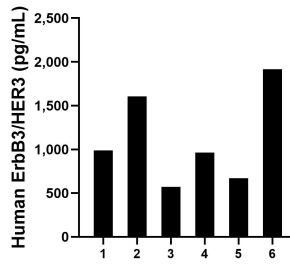
W: ptgcn.com

This product is exclusively available under Proteintech Group brand and is not available to purchase from any other manufacturer.

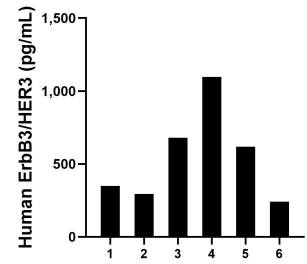
Selected Validation Data



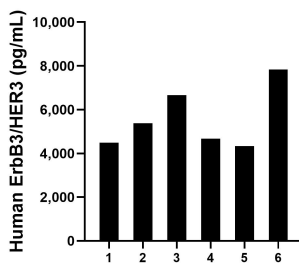
Sandwich ELISA standard curve of MP01777-1, Human ErbB3/HER3 Recombinant Matched Antibody Pair - PBS only. 85053-2-PBS was coated to a plate as the capture antibody and incubated with serial dilutions of standard Eg2245. 85053-1-PBS was HRP conjugated as the detection antibody. Range: 31.3-2000 pg/mL



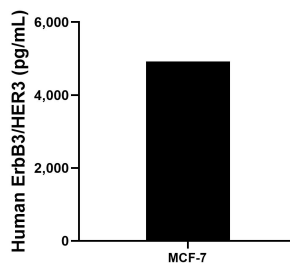
Saliva of six individual healthy human donors was measured. The ErbB3/HER3 concentration of detected samples was determined to be 1,118.6 pg/mL with a range of 572.4-1,916.5 pg/mL



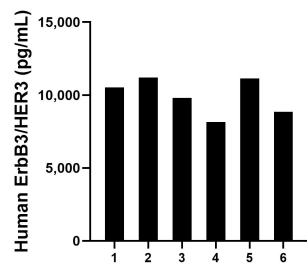
Urine of six individual healthy human donors was measured. The ErbB3/HER3 concentration of detected samples was determined to be 546.4 pg/mL with a range of 240.4-1,095.7 pg/mL



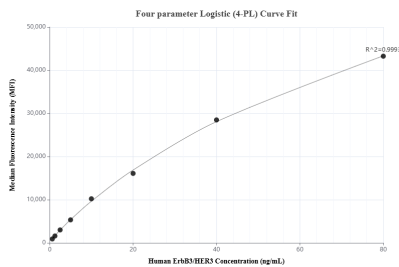
Human milk of six individual healthy human donors was measured. The ErbB3/HER3 concentration of detected samples was determined to be 5,561.2 pg/mL with a range of 4,339.8-7,839.0 pg/mL



MCF-7 cells were cultured in DMEM supplemented with 10% fetal bovine serum, 2.5 mM L-glutamine, 100 U/mL penicillin, and 100 µg/mL streptomycin sulfate. An aliquot of the cell culture supernatant was removed, assayed for human ErbB3/HER3, and measured 4,918.4 pg/mL



Serum of six individual healthy human donors was measured. The ErbB3/HER3 concentration of detected samples was determined to be 9,941.5 pg/mL with a range of 8,149.4-11,207.9 pg/mL



Cytometric bead array standard curve of MP01777-1, ErbB3/HER3 Recombinant Matched Antibody Pair, PBS Only. Capture antibody: 85053-2-PBS. Detection antibody: 85053-1-PBS. Standard: Eg2245. Range: 0.625-80 ng/mL