

For Research Use Only

S1PR1 Recombinant antibody, PBS Only (Capture/Detector)

Catalog Number:85059-2-PBS



Basic Information

Catalog Number: 85059-2-PBS	GenBank Accession Number: BC018650	Purification Method: Protein A purification
Concentration: 1 mg/ml	GeneID (NCBI): 1901	CloneNo.: 242592D3
Source: Rabbit	UNIPROT ID: P21453	
Isotype: IgG	Full Name: sphingosine-1-phosphate receptor 1	
Immunogen Catalog Number: AG28083	Calculated MW: 43 kDa	

Applications

Tested Applications:
Cytometric bead array, Sandwich ELISA, Indirect ELISA,
Sample test

Species Specificity:
human

Background Information

Storage

Storage:
Store at -80°C.
The product is shipped with ice packs. Upon receipt, store it immediately at -80°C

Storage Buffer:
PBS Only

For technical support and original validation data for this product please contact:

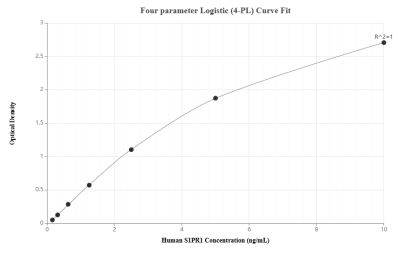
T: 4006900926

E: Proteintech-CN@ptglab.com

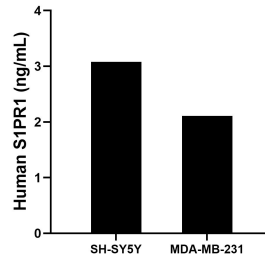
W: ptgcn.com

This product is exclusively available under Proteintech Group brand and is not available to purchase from any other manufacturer.

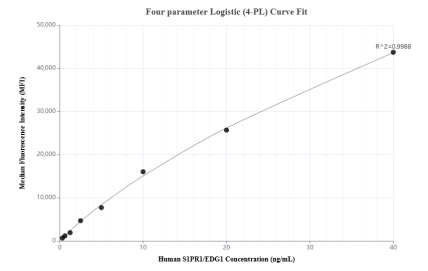
Selected Validation Data



Sandwich ELISA standard curve of MP01781-3, Human S1PR1/EDG1 Recombinant Matched Antibody Pair - PBS only. 85059-4-PBS was coated to a plate as the capture antibody and incubated with serial dilutions of standard Ag28083. 85059-2-PBS was HRP conjugated as the detection antibody. Range: 0.156-10 ng/mL



The mean S1PR1/EDG1 concentration was determined to be 3.08 ng/mL in SH-SY5Y cell extract based on a 3.2 mg/mL extract load and 2.11 ng/mL in MDA-MB-231 cell extract based on a 1.2 mg/mL extract load.



Cytometric bead array standard curve of MP01781-1, S1PR1/EDG1 Recombinant Matched Antibody Pair, PBS Only. Capture antibody: 85059-2-PBS. Detection antibody: 85059-1-PBS. Standard: Ag28083. Range: 0.313-40 ng/mL