

For Research Use Only

ROD1 Recombinant antibody, PBS Only (Capture)

Catalog Number:85061-1-PBS



Basic Information

Catalog Number: 85061-1-PBS	GenBank Accession Number: BC044585	Purification Method: Protein A purification
Size: 1 mg/ml	GeneID (NCBI): 9991	CloneNo.: 242641A6
Source: Rabbit	UNIPROT ID: O95758	
Isotype: IgG	Full Name: ROD1 regulator of differentiation 1 (S. pombe)	
Immunogen Catalog Number: AG5172	Calculated MW: 60 kDa	

Applications

Tested Applications:
Cytometric bead array, Sandwich ELISA, Indirect ELISA, Sample test

Species Specificity:
human

Background Information

Storage

Storage:
Store at -80°C.
The product is shipped with ice packs. Upon receipt, store it immediately at -80°C

Storage Buffer:
PBS Only

For technical support and original validation data for this product please contact:

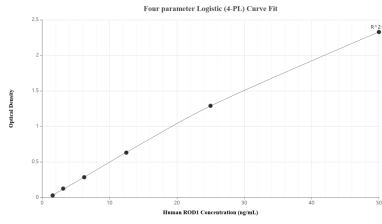
T: 4006900926

E: Proteintech-CN@ptglab.com

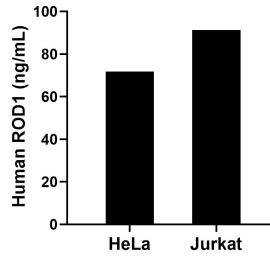
W: ptgcn.com

This product is exclusively available under Proteintech Group brand and is not available to purchase from any other manufacturer.

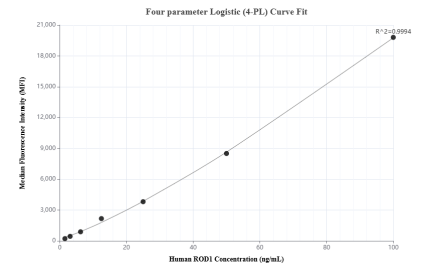
Selected Validation Data



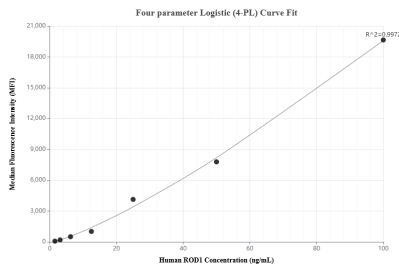
Sandwich ELISA standard curve of MP01782-2, Human ROD1 Recombinant Matched Antibody Pair - PBS only. 85061-1-PBS was coated to a plate as the capture antibody and incubated with serial dilutions of standard Ag5172. 85061-2-PBS was HRP conjugated as the detection antibody. Range: 1.56-50 ng/mL.



The mean ROD1 concentration was determined to be 71.78 ng/mL in HeLa cell extract based on a 1.50 mg/mL extract load and 91.18 ng/mL in Jurkat cell extract based on a 2.00 mg/mL extract load.



Cytometric bead array standard curve of MP01782-1, ROD1 Recombinant Matched Antibody Pair, PBS Only. Capture antibody: 85061-1-PBS. Detection antibody: 85061-3-PBS. Standard: Ag5172. Range: 1.563-100 ng/mL.



Cytometric bead array standard curve of MP01782-2, ROD1 Recombinant Matched Antibody Pair, PBS Only. Capture antibody: 85061-1-PBS. Detection antibody: 85061-2-PBS. Standard: Ag5172. Range: 1.563-100 ng/mL.