

For Research Use Only

# DDX46 Recombinant antibody, PBS Only (Capture)

Catalog Number:85065-3-PBS



## Basic Information

Catalog Number:

85065-3-PBS

Size:

1 mg/ml

Source:

Rabbit

Isotype:

IgG

Immunogen Catalog Number:

AG10342

GenBank Accession Number:

BC012304

GeneID (NCBI):

9879

UNIPROT ID:

Q7L014

Full Name:

DEAD (Asp-Glu-Ala-Asp) box polypeptide 46

Calculated MW:

1031 aa, 117 kDa

Purification Method:

Protein A purification

CloneNo.:

242715E10

## Applications

Tested Applications:

Cytometric bead array, Sandwich ELISA, Indirect ELISA, Sample test

Species Specificity:

human

## Background Information

### Storage

Storage:

Store at -80°C.

**The product is shipped with ice packs. Upon receipt, store it immediately at -80°C**

Storage Buffer:

PBS Only

For technical support and original validation data for this product please contact:

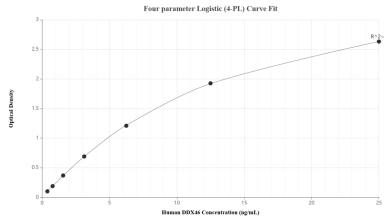
T: 4006900926

E: [Proteintech-CN@ptglab.com](mailto:Proteintech-CN@ptglab.com)

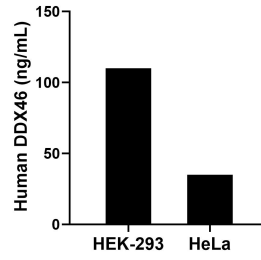
W: [ptgcn.com](http://ptgcn.com)

**This product is exclusively available under Proteintech Group brand and is not available to purchase from any other manufacturer.**

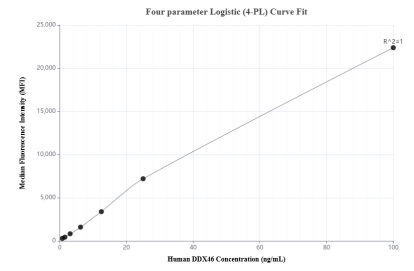
## Selected Validation Data



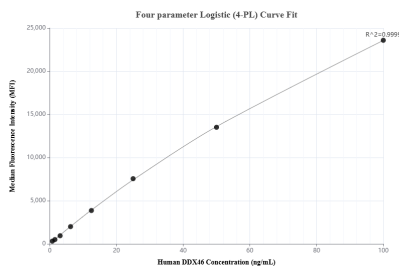
Sandwich ELISA standard curve of MP01807-1, Human DDX46 Recombinant Matched Antibody Pair - PBS only. 85065-3-PBS was coated to a plate as the capture antibody and incubated with serial dilutions of standard Ag10342. 85065-1-PBS was HRP conjugated as the detection antibody. Range: 0.391-25 ng/mL



The mean DDX46 concentration was determined to be 109.98 ng/mL in HEK-293 cell extract based on a 2.70 mg/mL extract load and 35.02 ng/mL in HeLa cell extract based on a 1.50 mg/mL extract load.



Cytometric bead array standard curve of MP01807-2, DDX46 Recombinant Matched Antibody Pair, PBS Only. Capture antibody: 85065-3-PBS. Detection antibody: 85065-2-PBS. Standard: Ag10342. Range: 0.781-100 ng/mL



Cytometric bead array standard curve of MP01807-1, DDX46 Recombinant Matched Antibody Pair, PBS Only. Capture antibody: 85065-3-PBS. Detection antibody: 85065-1-PBS. Standard: Ag10342. Range: 0.781-100 ng/mL