

For Research Use Only

CD27 Recombinant antibody, PBS Only (Detector)

Catalog Number:85066-1-PBS



Basic Information

Catalog Number: 85066-1-PBS	GenBank Accession Number: BC012160	Purification Method: Protein A purification
Size: 1 mg/ml	GeneID (NCBI): 939	CloneNo.: 242731B7
Source: Rabbit	ENSEMBL Gene ID: ENSG00000139193	
Isotype: IgG	UNIPROT ID: P26842	
	Full Name: CD27 molecule	
	Calculated MW: 29 kDa	

Applications

Tested Applications:
Cytometric bead array, Sandwich ELISA, Indirect ELISA,
Sample test

Species Specificity:
human

Background Information

Storage

Storage:
Store at -80°C.
The product is shipped with ice packs. Upon receipt, store it immediately at -80°C

Storage Buffer:
PBS Only

For technical support and original validation data for this product please contact:

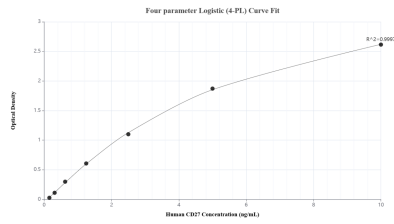
T: 4006900926

E: Proteintech-CN@ptglab.com

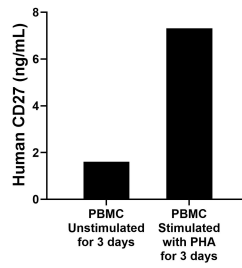
W: ptgcn.com

This product is exclusively available under Proteintech Group brand and is not available to purchase from any other manufacturer.

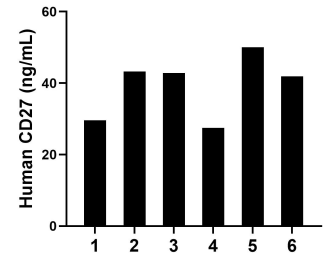
Selected Validation Data



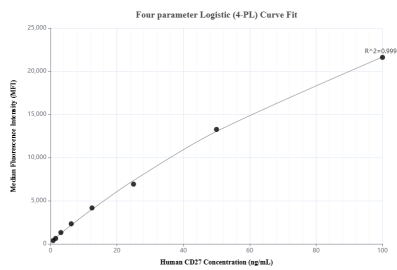
Sandwich ELISA standard curve of MP01811-3, Human CD27 Recombinant Matched Antibody Pair - PBS only. 85066-3-PBS was coated to a plate as the capture antibody and incubated with serial dilutions of standard Eg1644. 85066-1-PBS was HRP conjugated as the detection antibody. Range: 0.156-10 ng/mL.



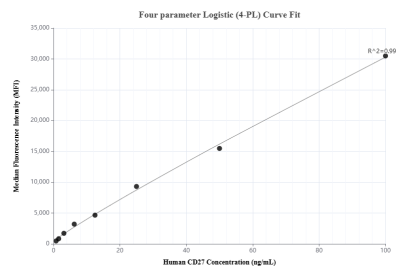
Human peripheral blood mononuclear cells (PBMC) were cultured unstimulated or stimulated with 10 μ g/mL PHA for 3 days. The mean CD27 concentration was determined to be 1.61 ng/mL in unstimulated PBMC supernatant, 7.31 ng/mL in PHA stimulated PBMC supernatant.



Serum of six individual healthy human donors was measured. The CD27 concentration of detected samples was determined to be 39.19 ng/mL with a range of 27.45-50.05 ng/mL.



Cytometric bead array standard curve of MP01811-2, CD27 Recombinant Matched Antibody Pair, PBS Only. Capture antibody: 85066-3-PBS. Detection antibody: 85066-1-PBS. Standard: Eg1644. Range: 0.781-100 ng/mL.



Cytometric bead array standard curve of MP01811-1, CD27 Recombinant Matched Antibody Pair, PBS Only. Capture antibody: 85066-2-PBS. Detection antibody: 85066-1-PBS. Standard: Eg1644. Range: 0.781-100 ng/mL.