

For Research Use Only

# CD27 Recombinant antibody, PBS Only (Capture)

Catalog Number:85066-3-PBS



## Basic Information

<b>Catalog Number:</b> 85066-3-PBS	<b>GenBank Accession Number:</b> BC012160	<b>Purification Method:</b> Protein A purification
<b>Size:</b> 1 mg/ml	<b>GeneID (NCBI):</b> 939	<b>CloneNo.:</b> 242731G8
<b>Source:</b> Rabbit	<b>ENSEMBL Gene ID:</b> ENSG00000139193	
<b>Isotype:</b> IgG	<b>UNIPROT ID:</b> P26842	
	<b>Full Name:</b> CD27 molecule	
	<b>Calculated MW:</b> 29 kDa	

## Applications

**Tested Applications:**  
Cytometric bead array, Sandwich ELISA, Indirect ELISA,  
Sample test

**Species Specificity:**  
human

## Background Information

### Storage

**Storage:**  
Store at -80°C.  
**The product is shipped with ice packs. Upon receipt, store it immediately at -80°C**

**Storage Buffer:**  
PBS Only

For technical support and original validation data for this product please contact:

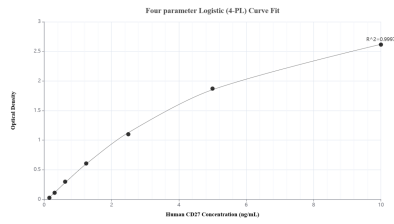
T: 4006900926

E: Proteintech-CN@ptglab.com

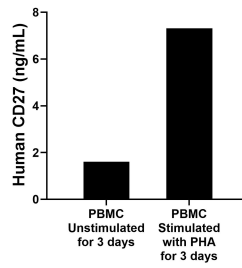
W: ptgcn.com

**This product is exclusively available under Proteintech Group brand and is not available to purchase from any other manufacturer.**

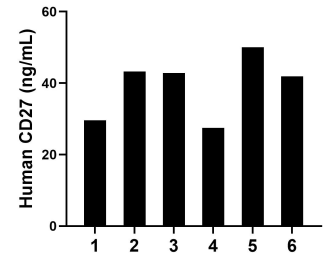
## Selected Validation Data



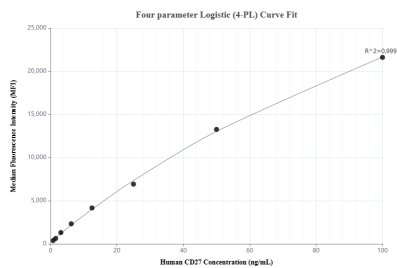
Sandwich ELISA standard curve of MP01811-3, Human CD27 Recombinant Matched Antibody Pair - PBS only. 85066-3-PBS was coated to a plate as the capture antibody and incubated with serial dilutions of standard Eg1644. 85066-1-PBS was HRP conjugated as the detection antibody. Range: 0.156-10 ng/mL.



Human peripheral blood mononuclear cells (PBMC) were cultured unstimulated or stimulated with 10  $\mu$ g/mL PHA for 3 days. The mean CD27 concentration was determined to be 1.61 ng/mL in unstimulated PBMC supernatant, 7.31 ng/mL in PHA stimulated PBMC supernatant.



Serum of six individual healthy human donors was measured. The CD27 concentration of detected samples was determined to be 39.19 ng/mL with a range of 27.45-50.05 ng/mL.



Cytometric bead array standard curve of MP01811-2, CD27 Recombinant Matched Antibody Pair, PBS Only. Capture antibody: 85066-3-PBS. Detection antibody: 85066-1-PBS. Standard: Eg1644. Range: 0.781-100 ng/mL.