

For Research Use Only

IRF7 Recombinant antibody, PBS Only (Capture)

Catalog Number: 85072-2-PBS



Basic Information

Catalog Number: 85072-2-PBS	GenBank Accession Number: BC136555	Purification Method: Protein A purification
Size: 1 mg/ml	GeneID (NCBI): 3665	CloneNo.: 242613F8
Source: Rabbit	UNIPROT ID: Q92985	
Isotype: IgG	Full Name: IRF 7	
Immunogen Catalog Number: AG18059	Calculated MW: 516 aa, 56 kDa	

Applications

Tested Applications:
Cytometric bead array, Sandwich ELISA, Indirect ELISA,
Sample test

Species Specificity:
human

Background Information

Storage

Storage:
Store at -80°C.
The product is shipped with ice packs. Upon receipt, store it immediately at -80°C

Storage Buffer:
PBS Only

For technical support and original validation data for this product please contact:

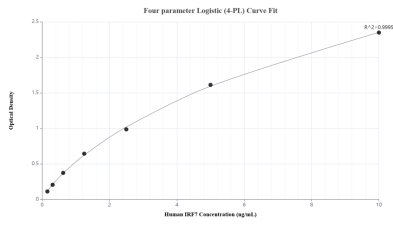
T: 4006900926

E: Proteintech-CN@ptglab.com

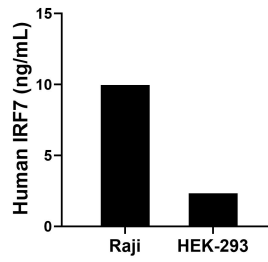
W: ptgcn.com

This product is exclusively available under Proteintech Group brand and is not available to purchase from any other manufacturer.

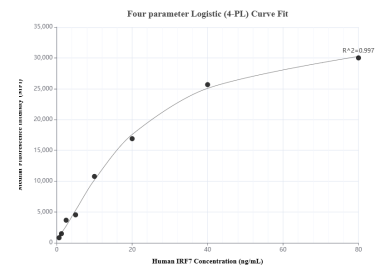
Selected Validation Data



Sandwich ELISA standard curve of MP01791-2, Human IRF7 Recombinant Matched Antibody Pair - PBS only. 85072-2-PBS was coated to a plate as the capture antibody and incubated with serial dilutions of standard Ag18059. 85072-3-PBS was HRP conjugated as the detection antibody. Range: 0.156-10 ng/mL



The mean IRF7 concentration was determined to be 9.97 ng/mL in Raji cell extract based on a 3.00 mg/mL extract load and 2.32 ng/mL in HEK-293 cell extract based on a 2.70 mg/mL extract load.



Cytometric bead array standard curve of MP01791-2, IRF7 Recombinant Matched Antibody Pair, PBS Only. Capture antibody: 85072-2-PBS. Detection antibody: 85072-3-PBS. Standard: Ag18059. Range: 0.625-80 ng/mL