

For Research Use Only

SLC8A1 Recombinant antibody, PBS Only (Detector)

Catalog Number:85082-2-PBS



Basic Information

Catalog Number:

85082-2-PBS

Size:

1 mg/ml

Source:

Rabbit

Isotype:

IgG

Immunogen Catalog Number:

AG28952

GenBank Accession Number:

NM_021097

GeneID (NCBI):

6546

UNIPROT ID:

P32418

Full Name:

solute carrier family 8
(sodium/calcium exchanger),
member 1

Calculated MW:

109 kDa

Purification Method:

Protein A purification

CloneNo.:

242764D4

Applications

Tested Applications:

Cytometric bead array, Sandwich ELISA, Indirect ELISA,
Sample test

Species Specificity:

human

Background Information

Storage

Storage:

Store at -80°C.

The product is shipped with ice packs. Upon receipt, store it immediately at -80°C

Storage Buffer:

PBS Only

For technical support and original validation data for this product please contact:

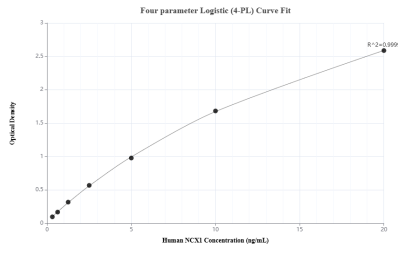
T: 4006900926

E: Proteintech-CN@ptglab.com

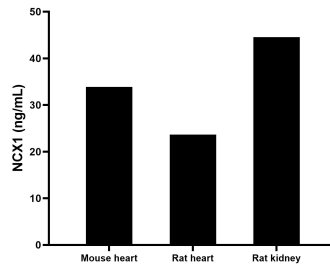
W: ptgcn.com

This product is exclusively available under Proteintech Group brand and is not available to purchase from any other manufacturer.

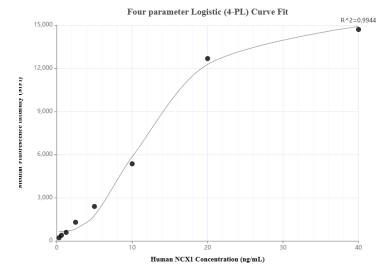
Selected Validation Data



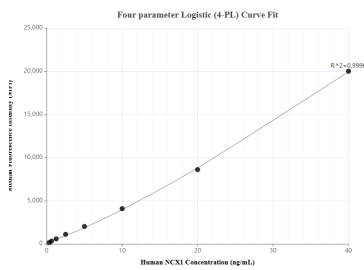
Sandwich ELISA standard curve of MP01816-1, Human NCX1 Recombinant Matched Antibody Pair - PBS only. 85082-3-PBS was coated to a plate as the capture antibody and incubated with serial dilutions of standard Ag28952. 85082-2-PBS was HRP conjugated as the detection antibody. Range: 0.313-20 ng/mL



The mean NCX1 concentration was determined to be 33.88 ng/mL in mouse heart tissue extract based on a 1.2 mg/mL extract load, 23.62 ng/mL in rat heart tissue extract based on a 3.0 mg/mL extract load and 44.53 ng/mL in rat kidney tissue extract based on a 2.0 mg/mL extract load.



Cytometric bead array standard curve of MP01816-2, NCX1 Recombinant Matched Antibody Pair, PBS Only. Capture antibody: 85082-1-PBS. Detection antibody: 85082-2-PBS. Standard: Ag28952. Range: 0.313-40 ng/mL



Cytometric bead array standard curve of MP01816-1, NCX1 Recombinant Matched Antibody Pair, PBS Only. Capture antibody: 85082-3-PBS. Detection antibody: 85082-2-PBS. Standard: Ag28952. Range: 0.313-40 ng/mL