

For Research Use Only

# C2 Recombinant antibody, PBS Only (Capture/Detector)

Catalog Number:85088-2-PBS



## Basic Information

<b>Catalog Number:</b> 85088-2-PBS	<b>GenBank Accession Number:</b> NM_000063.6	<b>Purification Method:</b> Protein A purification
<b>Size:</b> 1 mg/ml	<b>GeneID (NCBI):</b> 717	<b>CloneNo.:</b> 242739F4
<b>Source:</b> Rabbit	<b>UNIPROT ID:</b> P06681-1	
<b>Isotype:</b> IgG	<b>Full Name:</b> complement component 2	
	<b>Calculated MW:</b> 83 kDa	

## Applications

**Tested Applications:**  
Cytometric bead array, Sandwich ELISA, Indirect ELISA,  
Sample test

**Species Specificity:**  
human

## Background Information

### Storage

**Storage:**  
Store at -80°C.  
**The product is shipped with ice packs. Upon receipt, store it immediately at -80°C**  
**Storage Buffer:**  
PBS Only

For technical support and original validation data for this product please contact:

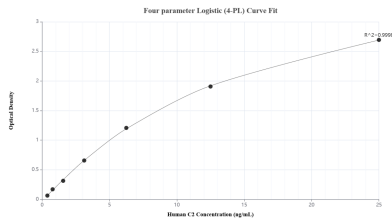
T: 4006900926

E: [Proteintech-CN@ptglab.com](mailto:Proteintech-CN@ptglab.com)

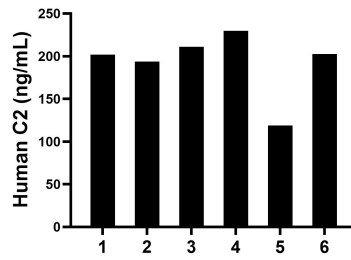
W: [ptgcn.com](http://ptgcn.com)

**This product is exclusively available under Proteintech Group brand and is not available to purchase from any other manufacturer.**

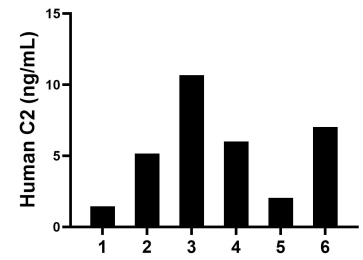
## Selected Validation Data



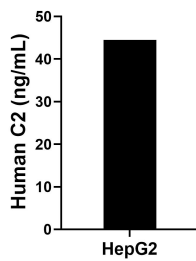
Sandwich ELISA standard curve of MP01780-3, Human C2 Recombinant Matched Antibody Pair - PBS only. 85088-2-PBS was coated to a plate as the capture antibody and incubated with serial dilutions of standard Eg3058. 85088-3-PBS was HRP conjugated as the detection antibody. Range: 0.391-25 ng/mL



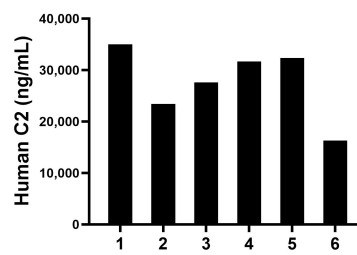
Human milk of six individual healthy human donors was measured. The C2 concentration of detected samples was determined to be 192.92 ng/mL with a range of 118.70-229.78 ng/mL



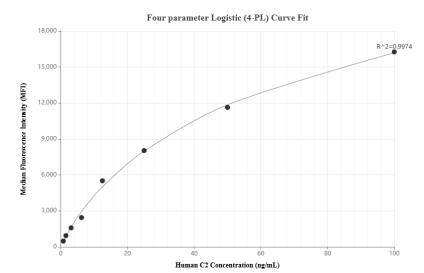
Saliva of six individual healthy human donors was measured. The C2 concentration of detected samples was determined to be 5.39 ng/mL with a range of 1.44-10.68 ng/mL



HepG2 were cultured in DMEM supplemented with 10% fetal bovine serum, 2.5 mM L-glutamine, 100 U/mL penicillin, and 100 µg/mL streptomycin sulfate. An aliquot of the cell culture supernate was removed, assayed for human C2, and measured 44.51 ng/mL



Serum of six individual healthy human donors was measured. The C2 concentration of detected samples was determined to be 27,730.87 ng/mL with a range of 16,308.58-35,021.63 ng/mL



Cytometric bead array standard curve of MP01780-1, C2 Recombinant Matched Antibody Pair, PBS Only. Capture antibody: 85088-3-PBS. Detection antibody: 85088-2-PBS. Standard: Eg3058. Range: 0.781-100 ng/mL