

For Research Use Only

ETS2 Recombinant antibody, PBS Only (Capture)

Catalog Number: 85113-4-PBS



Basic Information

Catalog Number: 85113-4-PBS	GenBank Accession Number: BC017040	Purification Method: Protein A purification
Concentration: 1 mg/ml	GeneID (NCBI): 2114	CloneNo.: 242817H8
Source: Rabbit	UNIPROT ID: P15036	
Isotype: IgG	Full Name: v-ets erythroblastosis virus E26 oncogene homolog 2 (avian)	
Immunogen Catalog Number: AG2929	Calculated MW: 469 aa, 53 kDa	

Applications

Tested Applications:
IF/ICC, FC (Intra), Sandwich ELISA, Indirect ELISA, Sample test

Species Specificity:
human

Background Information

Storage

Storage:
Store at -80°C.
The product is shipped with ice packs. Upon receipt, store it immediately at -80°C

Storage Buffer:
PBS only, pH7.3

For technical support and original validation data for this product please contact:

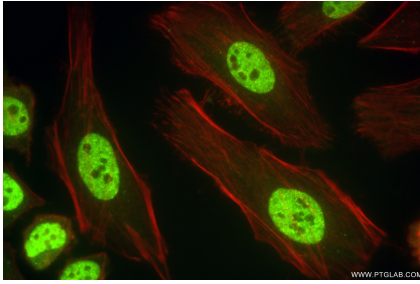
T: 4006900926

E: Proteintech-CN@ptglab.com

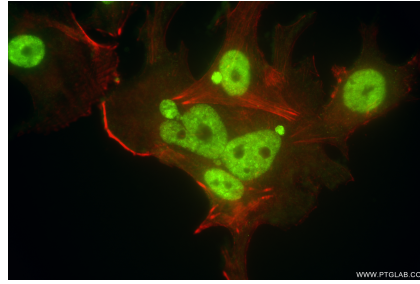
W: ptgcn.com

This product is exclusively available under Proteintech Group brand and is not available to purchase from any other manufacturer.

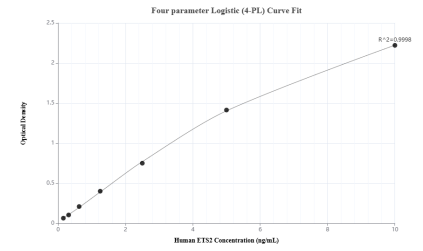
Selected Validation Data



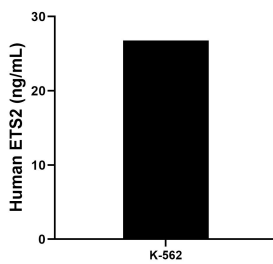
Immunofluorescent analysis of (4% PFA) fixed HeLa cells using ETS2 antibody (85113-4-RR, Clone: 242817H8) at dilution of 1:1000 and CoraLite®488-Conjugated Goat Anti-Rabbit IgG(H+L) (SA00013-2), CL594-Phalloidin (red). This data was developed using the same antibody clone with 85113-4-PBS in a different storage buffer formulation.



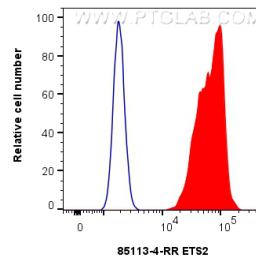
Immunofluorescent analysis of (4% PFA) fixed MCF-7 cells using ETS2 antibody (85113-4-RR, Clone: 242817H8) at dilution of 1:1000 and CoraLite®488-Conjugated Goat Anti-Rabbit IgG(H+L) (SA00013-2), CL594-Phalloidin (red). This data was developed using the same antibody clone with 85113-4-PBS in a different storage buffer formulation.



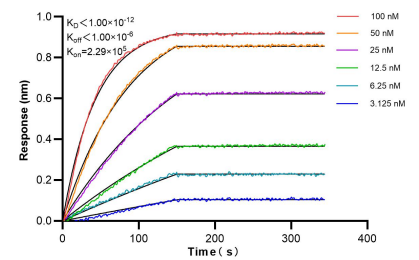
Sandwich ELISA standard curve of MP01858-3, Human ETS2 Recombinant Matched Antibody Pair - PBS only. 85113-4-PBS was coated to a plate as the capture antibody and incubated with serial dilutions of standard Ag2929. 85113-1-PBS was HRP conjugated as the detection antibody. Range: 0.156-10 ng/mL



The mean ETS2 concentration was determined to be 26.79 ng/mL in K-562 cell extract based on a 2.0 mg/mL extract load.



1x10⁶ MCF-7 cells were intracellularly stained with 0.25 ug ETS2 Recombinant antibody (85113-4-RR, Clone:242817H8) and CoraLite®488-Conjugated Goat Anti-Rabbit IgG(H+L) (SA00013-2)(red), or 0.25 ug Rabbit IgG Isotype Control RecAb (98136-1-RR, Clone: 240953C9) (blue). Cells were fixed and permeabilized with Transcription Factor Staining Buffer Kit (PF00011). This data was developed using the same antibody clone with 85113-4-PBS in a different storage buffer



Bi-layer interferometry (BLI) kinetic assays of 85113-4-RR against Human ETS2 were performed. The affinity constant is below 1 pM.