

For Research Use Only

# HCLS1 Recombinant antibody, PBS Only (Capture)

Catalog Number: 85114-1-PBS



## Basic Information

<b>Catalog Number:</b> 85114-1-PBS	<b>GenBank Accession Number:</b> BC016758	<b>Purification Method:</b> Protein A purification
<b>Size:</b> 1 mg/ml	<b>GeneID (NCBI):</b> 3059	<b>CloneNo.:</b> 242825E4
<b>Source:</b> Rabbit	<b>UNIPROT ID:</b> P14317	
<b>Isotype:</b> IgG	<b>Full Name:</b> hematopoietic cell-specific Lyn substrate 1	
<b>Immunogen Catalog Number:</b> AG8645	<b>Calculated MW:</b> 486 aa, 54 kDa	

## Applications

**Tested Applications:**  
Cytometric bead array, Sandwich ELISA, Indirect ELISA,  
Sample test

**Species Specificity:**  
human

## Background Information

### Storage

**Storage:**  
Store at -80°C.  
**The product is shipped with ice packs. Upon receipt, store it immediately at -80°C**

**Storage Buffer:**  
PBS Only

For technical support and original validation data for this product please contact:

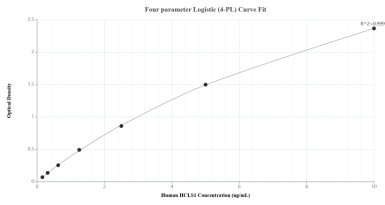
T: 4006900926

E: Proteintech-CN@ptglab.com

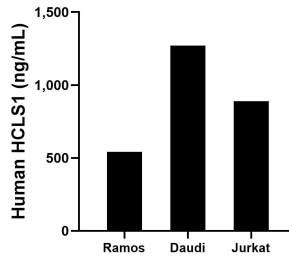
W: ptgcn.com

**This product is exclusively available under Proteintech Group brand and is not available to purchase from any other manufacturer.**

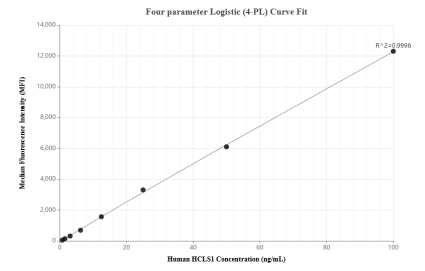
## Selected Validation Data



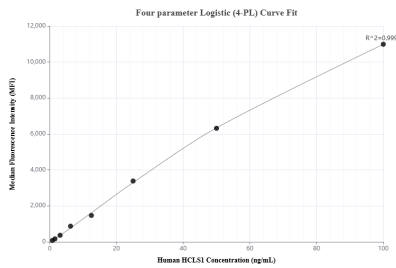
Sandwich ELISA standard curve of MP01860-1, Human HCLS1 Recombinant Matched Antibody Pair - PBS only. 85114-1-PBS was coated to a plate as the capture antibody and incubated with serial dilutions of standard Ag8645. 85114-2-PBS was HRP conjugated as the detection antibody. Range: 0.156-10 ng/mL



The mean HCLS1 concentration was determined to be 541.92 ng/mL in Ramos cell extract based on a 1.40 mg/mL extract load, 1,269.82 ng/mL in Daudi cell extract based on a 3.60 mg/mL extract load and 889.93 ng/mL in Jurkat cell extract based on a 3.10 mg/mL extract load.



Cytometric bead array standard curve of MP01860-1, HCLS1 Recombinant Matched Antibody Pair, PBS Only. Capture antibody: 85114-1-PBS. Detection antibody: 85114-2-PBS. Standard: Ag8645. Range: 0.781-100 ng/mL



Cytometric bead array standard curve of MP01860-2, HCLS1 Recombinant Matched Antibody Pair, PBS Only. Capture antibody: 85114-1-PBS. Detection antibody: 85114-3-PBS. Standard: Ag8645. Range: 0.781-100 ng/mL