

For Research Use Only

HCLS1 Recombinant antibody, PBS Only (Detector)

Catalog Number: 85114-2-PBS



Basic Information

Catalog Number: 85114-2-PBS	GenBank Accession Number: BC016758	Purification Method: Protein A purification
Size: 1 mg/ml	GeneID (NCBI): 3059	CloneNo.: 242825F10
Source: Rabbit	UNIPROT ID: P14317	
Isotype: IgG	Full Name: hematopoietic cell-specific Lyn substrate 1	
Immunogen Catalog Number: AG8645	Calculated MW: 486 aa, 54 kDa	

Applications

Tested Applications:
Cytometric bead array, Sandwich ELISA, Indirect ELISA,
Sample test

Species Specificity:
human

Background Information

Storage

Storage:
Store at -80°C.
The product is shipped with ice packs. Upon receipt, store it immediately at -80°C

Storage Buffer:
PBS Only

For technical support and original validation data for this product please contact:

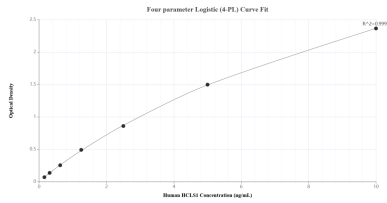
T: 4006900926

E: Proteintech-CN@ptglab.com

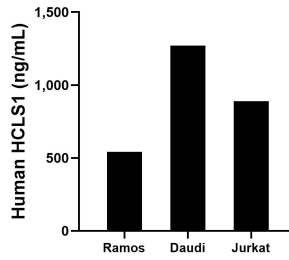
W: ptgcn.com

This product is exclusively available under Proteintech Group brand and is not available to purchase from any other manufacturer.

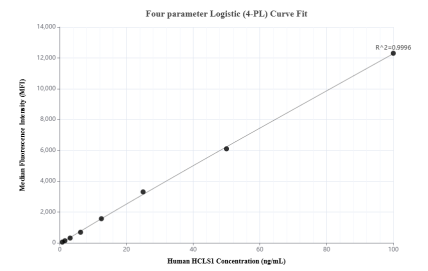
Selected Validation Data



Sandwich ELISA standard curve of MP01860-1, Human HCLS1 Recombinant Matched Antibody Pair - PBS only. 85114-1-PBS was coated to a plate as the capture antibody and incubated with serial dilutions of standard Ag8645. 85114-2-PBS was HRP conjugated as the detection antibody. Range: 0.156-10 ng/mL



The mean HCLS1 concentration was determined to be 541.92 ng/mL in Ramos cell extract based on a 1.40 mg/mL extract load, 1,269.82 ng/mL in Daudi cell extract based on a 3.60 mg/mL extract load and 889.93 ng/mL in Jurkat cell extract based on a 3.10 mg/mL extract load.



Cytometric bead array standard curve of MP01860-1, HCLS1 Recombinant Matched Antibody Pair, PBS Only. Capture antibody: 85114-1-PBS. Detection antibody: 85114-2-PBS. Standard: Ag8645. Range: 0.781-100 ng/mL