

For Research Use Only

# Mouse Pon2 Recombinant antibody, PBS Only (Detector)

Catalog Number:85126-2-PBS



## Basic Information

Catalog Number:

85126-2-PBS

Size:

1 mg/ml

Source:

Rabbit

Isotype:

IgG

GenBank Accession Number:

NM\_183308.2

GeneID (NCBI):

330260

UNIPROT ID:

Q62086

Full Name:

paraoxonase 2

Calculated MW:

40 kDa

Purification Method:

Protein A purification

CloneNo.:

242673D8

## Applications

Tested Applications:

Cytometric bead array, Sandwich ELISA, Indirect ELISA,  
Sample test

Species Specificity:

mouse

## Background Information

### Storage

Storage:

Store at -80°C.

**The product is shipped with ice packs. Upon receipt, store it immediately at -80°C**

Storage Buffer:

PBS Only

For technical support and original validation data for this product please contact:

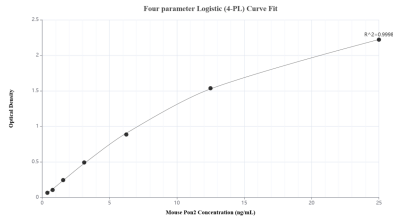
T: 4006900926

E: [Proteintech-CN@ptglab.com](mailto:Proteintech-CN@ptglab.com)

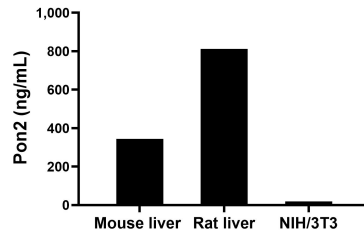
W: [ptgcn.com](http://ptgcn.com)

**This product is exclusively available under Proteintech Group brand and is not available to purchase from any other manufacturer.**

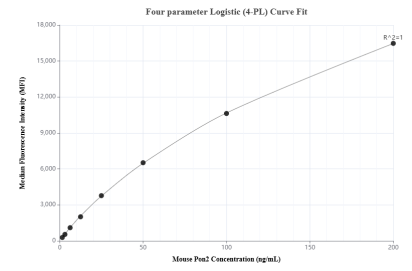
## Selected Validation Data



Sandwich ELISA standard curve of MP01843-1, Mouse Pon2 Recombinant Matched Antibody Pair - PBS only. 85126-4-PBS was coated to a plate as the capture antibody and incubated with serial dilutions of standard Eg2741. 85126-2-PBS was HRP conjugated as the detection antibody. Range: 0.391-25 ng/mL



The mean Pon2 concentration was determined to be 344.03 ng/mL in mouse liver cell extract based on a 3.70 mg/mL extract load, 812.45 ng/mL in rat liver cell extract based on a 2.60 mg/mL extract load and 19.36 ng/mL in NIH/3T3 cell extract based on a 1.50 mg/mL extract load.



Cytometric bead array standard curve of MP01843-1, MOUSE Pon2 Recombinant Matched Antibody Pair, PBS Only. Capture antibody: 85126-4-PBS. Detection antibody: 85126-2-PBS. Standard: Eg2741. Range: 1.563-200 ng/mL