

For Research Use Only

# ASCC3 Recombinant antibody, PBS Only (Detector)

Catalog Number: 85130-2-PBS



## Basic Information

<b>Catalog Number:</b> 85130-2-PBS	<b>GenBank Accession Number:</b> BC050681	<b>Purification Method:</b> Protein A purification
<b>Concentration:</b> 1 mg/ml	<b>GeneID (NCBI):</b> 10973	<b>CloneNo.:</b> 242755B4
<b>Source:</b> Rabbit	<b>UNIPROT ID:</b> Q8N3C0	
<b>Isotype:</b> IgG	<b>Full Name:</b> activating signal cointegrator 1 complex subunit 3	
<b>Immunogen Catalog Number:</b> AG11848	<b>Calculated MW:</b> 111 aa, 13 kDa, 251 kDa	
	<b>Observed MW:</b> 245 kDa	

## Applications

**Tested Applications:**  
WB, IF/ICC, Cytometric bead array, Indirect ELISA

**Species Specificity:**  
human, mouse

## Background Information

ASCC3 (Activating Signal Cointegrator 1 Complex Subunit 3) is a multifunctional protein involved in various cellular processes, including transcriptional regulation, DNA repair, and ribosome quality control. It is a member of the ASCC (Activating Signal Cointegrator 1 Complex) family, which functions as a bridge between co-repressors and co-activators in transcriptional regulation.

## Storage

**Storage:**  
Store at -80°C.  
**The product is shipped with ice packs. Upon receipt, store it immediately at -80°C**

**Storage Buffer:**  
PBS only

For technical support and original validation data for this product please contact:

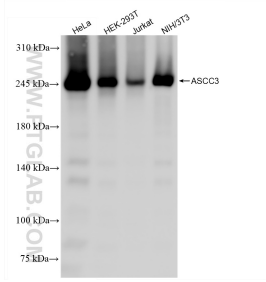
T: 4006900926

E: [Proteintech-CN@ptglab.com](mailto:Proteintech-CN@ptglab.com)

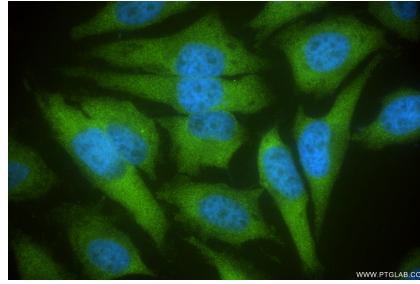
W: [ptgcn.com](http://ptgcn.com)

**This product is exclusively available under Proteintech Group brand and is not available to purchase from any other manufacturer.**

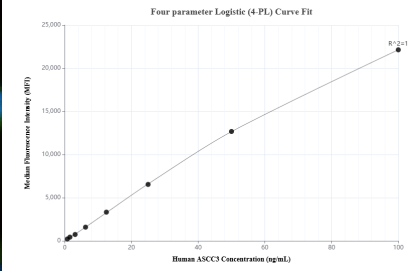
## Selected Validation Data



Various lysates were subjected to SDS PAGE followed by western blot with 85130-2-RR (ASCC3 antibody) at dilution of 1:10000 incubated at room temperature for 1.5 hours. This data was developed using the same antibody clone with 85130-2-PBS in a different storage buffer formulation.



Immunofluorescent analysis of (4% PFA) fixed HeLa cells using ASCC3 antibody (85130-2-RR, Clone: 242755B4) at dilution of 1:200 and CoraLite® 488-Conjugated Goat Anti-Rabbit IgG(H+L) (SA00013-2). This data was developed using the same antibody clone with 85130-2-PBS in a different storage buffer formulation.



Cytometric bead array standard curve of MP01828-1, ASCC3 Recombinant Matched Antibody Pair, PBS Only. Capture antibody: 85130-1-PBS. Detection antibody: 85130-2-PBS. Standard: Ag11848. Range: 0.781-100 ng/mL.