

For Research Use Only

# ASCC3 Recombinant antibody

Catalog Number:85130-2-RR



## Basic Information

Catalog Number:

85130-2-RR

Concentration:

1000 µg/ml

Source:

Rabbit

Isotype:

IgG

Immunogen Catalog Number:

AG11848

GenBank Accession Number:

BC050681

GeneID (NCBI):

10973

UNIPROT ID:

Q8N3C0

Full Name:

activating signal cointegrator 1  
complex subunit 3

Calculated MW:

111 aa, 13 kDa, 251 kDa

Observed MW:

245 kDa

Purification Method:

Protein A purification

CloneNo.:

242755B4

Recommended Dilutions:

WB 1:5000-1:50000

IF/ICC 1:50-1:500

## Applications

Tested Applications:

WB, IF/ICC, ELISA

Species Specificity:

human, mouse

Positive Controls:

WB : HeLa cells, HEK-293t cells, Jurkat cells, NIH/3T3 cells

IF/ICC : HeLa cells,

## Background Information

ASCC3 (Activating Signal Cointegrator 1 Complex Subunit 3) is a multifunctional protein involved in various cellular processes, including transcriptional regulation, DNA repair, and ribosome quality control. It is a member of the ASCC (Activating Signal Cointegrator 1 Complex) family, which functions as a bridge between co-repressors and co-activators in transcriptional regulation.

## Storage

Storage:

Store at -20°C. Stable for one year after shipment.

Storage Buffer:

PBS with 0.02% sodium azide and 50% glycerol

Aliquoting is unnecessary for -20°C storage

For technical support and original validation data for this product please contact:

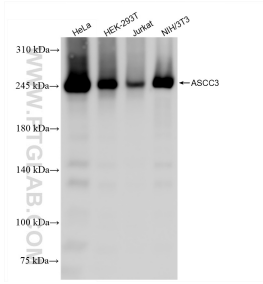
T: 4006900926

E: Proteintech-CN@ptglab.com

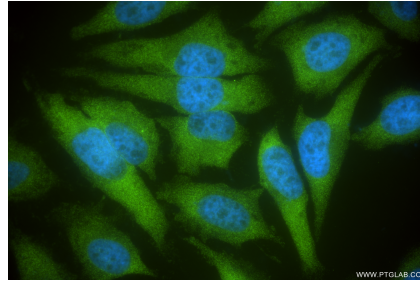
W: ptgcn.com

**This product is exclusively available under Proteintech Group brand and is not available to purchase from any other manufacturer.**

## Selected Validation Data



Various lysates were subjected to SDS PAGE followed by western blot with 85130-2-RR (ASCC3 antibody) at dilution of 1:10000 incubated at room temperature for 1.5 hours.



Immunofluorescent analysis of (4% PFA) fixed HeLa cells using ASCC3 antibody (85130-2-RR, Clone: 24275B4) at dilution of 1:200 and CoraLite® 488-Conjugated Goat Anti-Rabbit IgG(H+L) (SA00013-2).